

# Priest Collection

Slides 1.1 – 1.26

This small but interesting collection has a slant towards the Paleoindian and Archaic time periods, with a notable number of projectile points and axes especially coming from the Middle and Late Archaic. This suggests the most intensive period of occupation for the area of this collection comes from a wide date range of about 9500 - 500 BC, with an uptick in activity between 5,500 – 500 BC. Other artifact types represented include bifaces and unidentified projectile points, as well as one polished hematite celt, showing the ancient peoples used the area for not only hunting, but engaging in day-to-day camp activities.

Artifact donations from Daniel Priest Family. Written by Seraphina Carey, edited by John Doershuk and Dan Horgen with contributions from Warren Davis and Cherie Haury-Artz.



**1.1**

**Biface fragment, unidentified Pennsylvanian chert**



**1.2**

**Biface, Maynes Creek variety chert**



**1.3**

**Unidentified projectile point blade fragment,  
heat-treated Maynes Creek variety chert**



**1.4**

**Unidentified projectile point blade fragment,  
Maynes Creek variety chert**



**1.5**

**Unidentified projectile point body, blade, and partial neck fragment, corner notching technique,**



**1.6**

**Bifacial knife, retouched flaking along blade edge,  
Maynes Creek variety chert**



**1.7**

**Early Archaic projectile point body and blade fragment, Maynes Creek variety chert**



**1.8**

**Middle Archaic, Karnak projectile point, Maynes  
Creek variety chert**



**1.9**

**Middle Archaic, Karnak projectile point,  
Burlington chert**



**1.10**

**Late Paleoindian, Agate Basin projectile point,  
heat-treated Maynes Creek variety chert**



**1.11**

**Late Archaic, Sedalia projectile point, heat-treated  
Burlington chert**



**1.12**

**Late Archaic, Sedalia projectile point, Maynes  
Creek variety chert**



**1.13**

**Middle Archaic, Turin projectile point, Knife River  
Flint**



**1.14**

**Late Archaic, Sedalia projectile point, Burlington  
chert**



**1.15**

**Late Archaic, Table Rock projectile point, Maynes  
Creek variety chert**



**1.16**

**Late Archaic / Early Late Woodland, Pelican Lake  
projectile point, Croton Chalcedony**



**1.17**

**Middle Woodland, Manker projectile point,  
Winterset chert**



**1.18**

**Celt, heavily polished**



**1.19**

**Celt, polished Hematite**



**1.20**

**Middle Archaic, fully grooved axe fragment,  
Granite**



CM



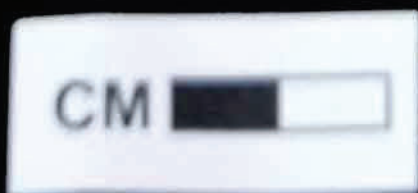
**1.21**

**Middle / Late Archaic, flat-polled, three-quarter  
grooved axe, Granite**



**1.22**

**Middle / Late Archaic, rounded-polled,  
three-quarter grooved axe, Granite**



**1.23**

**Middle / Late Archaic, rounded-polled,  
three-quarter grooved axe fragment, Granite**



CM



**1.24**

**Middle / Late Archaic, rounded-polled,  
three-quarter grooved axe, Granite**



CM

**1.25**

**Middle / Late Archaic, rounded-polled,  
three-quarter grooved axe, Granite**



CM



**1.26**

**Pitted-stone or maul, Granite**

