

Johnson-Keeling Collection

Slides 2.1 – 2.130

This collection contains an extensive assemblage of projectile points similar in date to others in this donation, including identifiable Archaic and later types. However, what marks the Johnson-Keeling Collection is the unique ground stone tools. A rare Middle Archaic butterfly bannerstone blank/preform used for either a counterweight while drilling or hunting is part of this collection. Also, there is a sandstone abrader perfect in size to smooth bone awls or needles. Many grooved axes also are included in this assemblage, including a 3/4-grooved axe of prodigious size and craftsmanship rarely seen intact after so many centuries. A sizeable intact metate (a rock slab used as a platform for grinding items, usually seeds), is included. While that is by no means the extent of this collection, these eye-catching, rare items contribute greatly to the history of Yellow Banks.

Artifact donations from Charles Johnson Family. Written by Seraphina Carey, edited by John Doershuk and Dan Horgen with contributions from Warren Davis and Cherie Haury-Artz.



2.2

Waste flake, heat-treat



CM



2.3

Utilized flake, Maynes Creek variety chert



CM



2.5

Utilized flake, Maynes Creek variety chert



CM



2.6

Utilized flake, Maynes Creek variety chert

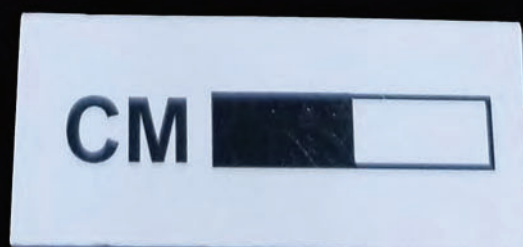


CM



2.7

Knife, Maynes Creek variety chert



2.8

**Late-stage biface/preform, heat-treated
Maynes Creek variety chert**



CM



2.9

End scraper, heat-treated Croton Chalcedonic

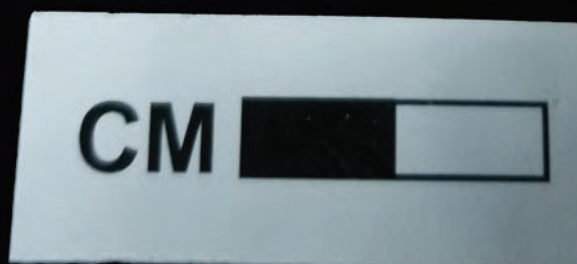
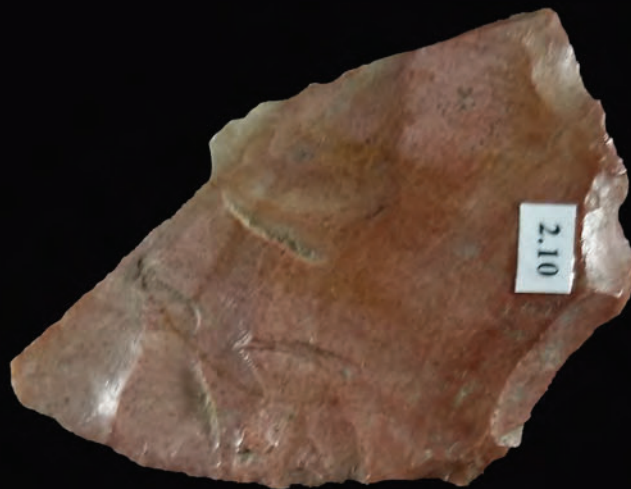


CM



2.10

**Biface fragment. heat-treated Maynes Creek
variety chert**



2.11

**Late-stage biface, heat-treated Maynes Creek
variety chert**

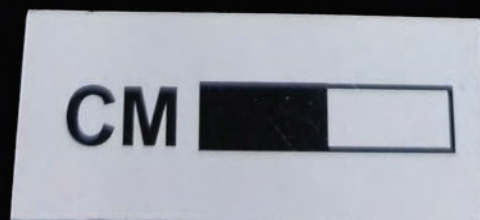
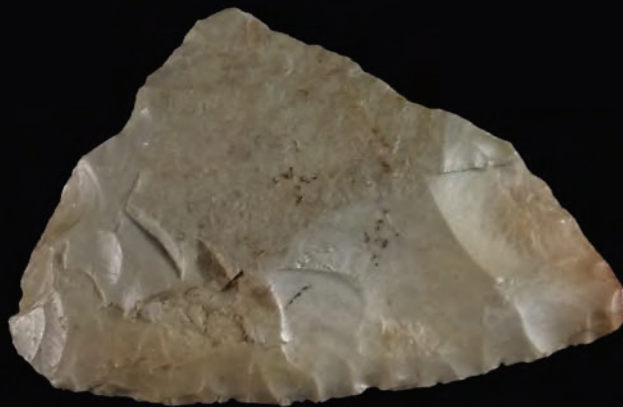


CM



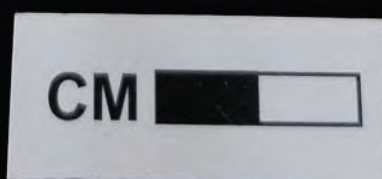
2.12

**Bifacial knife, heat-treated Warsaw Tabular
chert**



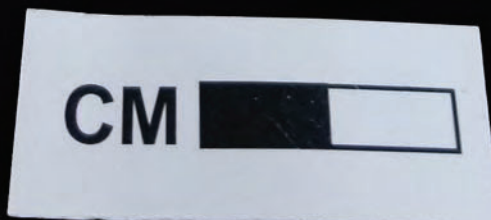
2.13

Biface, heat-treated Maynes Creek variety chert



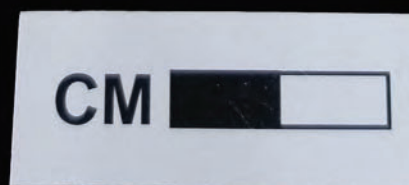
2.14

**Bifacial knife, heat-treated Maynes Creek
variety chert**



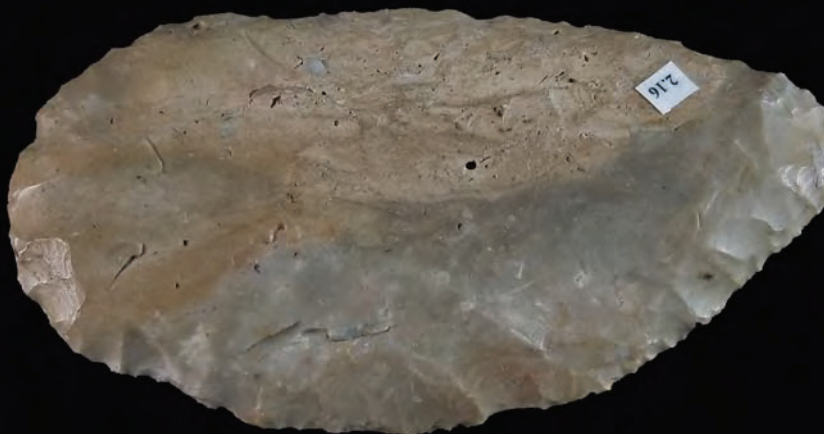
2.15

Biface, heat-treated Maynes Creek variety chert



2.16

**Late-stage biface/preform, heat-treated
Winterset chert**



CM



2.17

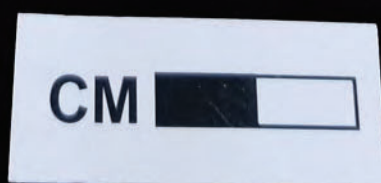
**Late-stage biface/preform, heat-treated Croton
Chalcedony**



CM 

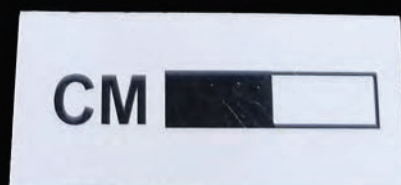
2.18

Late-stage biface/preform, Burlington chert



2.19

Biface, heat-treated Winterset chert



2.20

Biface, Winterset chert



CM



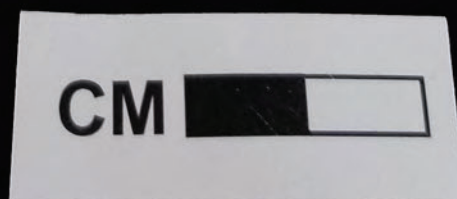
2.21

Paleoindian, knife, channel flake removed from the base, Maynes Creek variety chert



2.22

**Late Paleoindian, Agate Basin projectile point,
Croton Banded chert**



2.23

**Bifacial knife. Heat-treated, Maynes Creek
variety chert**



CM



2.24

Unidentified projectile point, midsection and partial proximal end, heat-treated Maynes Creek variety chert



CM



2.25

Bifacial knife, heat-treated Argentine chert



CM



2.26

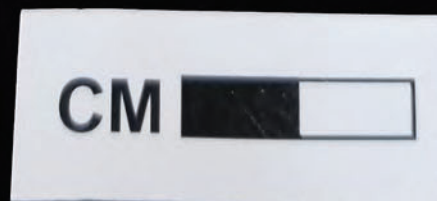
**Middle Woodland, Gibson projectile point,
distal end, midsection, partial proximal
end-shoulder and notch, heat-treated Warsaw
Tabular chert**



CM 

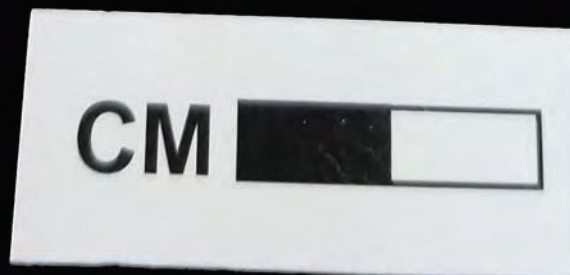
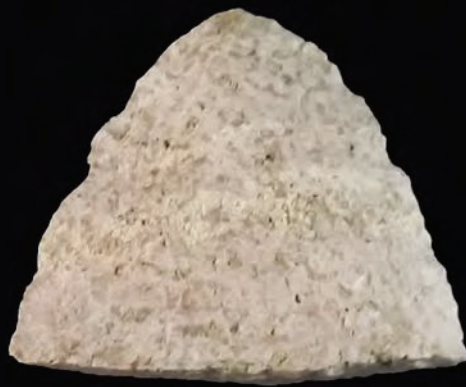
2.27

**Early Archaic, Kirk Cluster projectile point,
Maynes Creek variety chert**



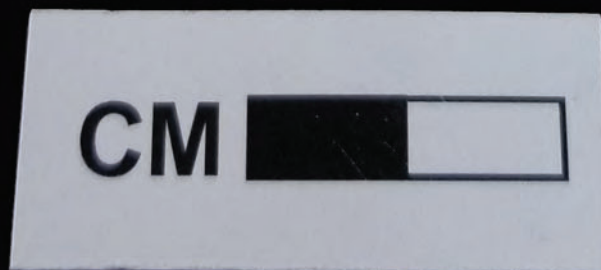
2.28

**Unidentified projectile point, distal end,
heat-treated Burlington chert**



2.29

Unidentified projectile point, distal end and midsection, heat-treated Maynes Creek variety chert



2.30

**Middle / Late Archiac, Raddatz projectile point,
heat-treated Maynes Creek variety chert**



CM 

2.31

**Late-stage biface/preform, heat-treated
Maynes Creek variety chert**



CM



2.32

**Late Archaic, Durst projectile point, heat-treated
Croton Chalcedonic**



CM



2.33

**Late Archaic, Sedalia projectile point,
midsection and partial proximal end,
heat-treated Maynes Creek variety chert**

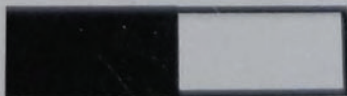


2.34

**Late-stage biface, rounded distal end,
midsection, and proximal end-side notching
technique, Maynes Creek variety chert**

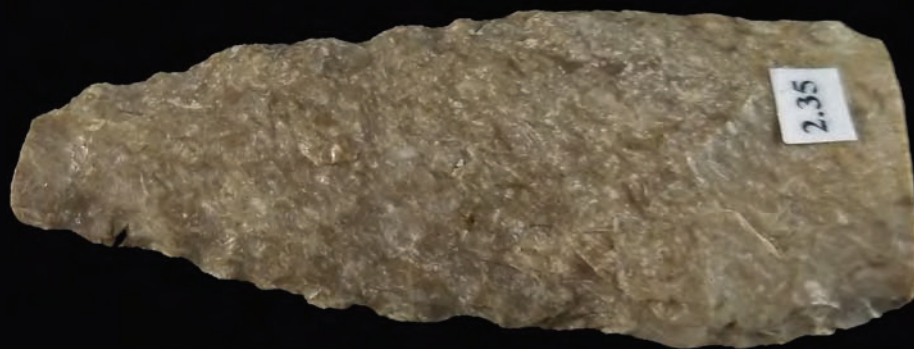


CM



2.35

**Late Archaic, Nebo Hill projectile point, partial
distal end and midsection, heat-treated Maynes
Creek variety chert**

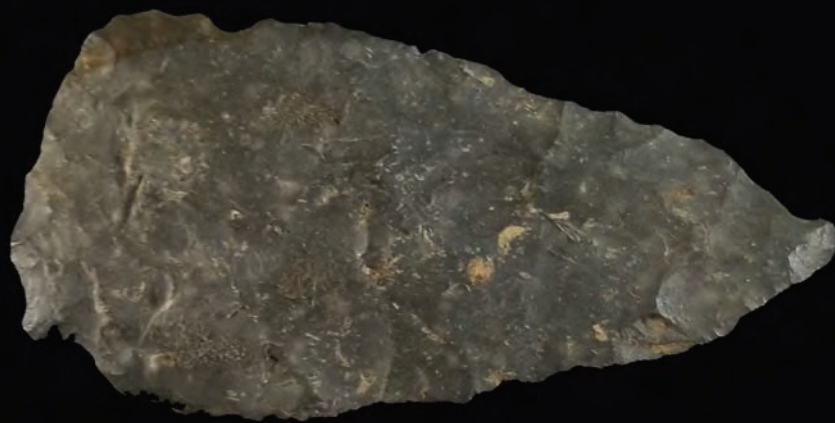


CM



2.36

**Bifaceal knife, heat-treated unidentified
Pennsylvanian chert**

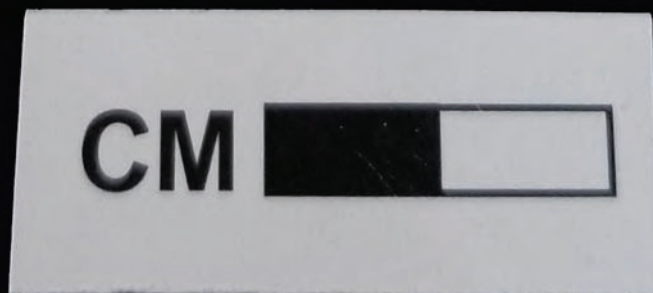


CM



2.37

**Early Archaic, Kirk Cluster projectile point,
midsection and proximal end,
Croton Chalcedonic**



2.38

**Late Archaic, Durst projectile point, heat-treated
Maynes Creek variety chert**



CM



2.39

**Unidentified projectile point, distal end,
heat-treated Croton Chalcedonic**

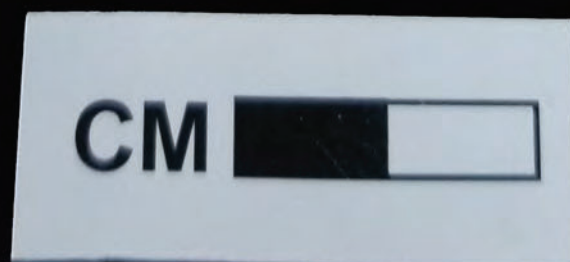


CM



2.40

**Late-stage biface, heat-treated Maynes Creek
variety chert**

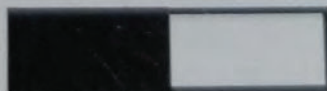


2.41

**Early Woodland, Kramer projectile point,
heat-treated Maynes Creek variety chert**

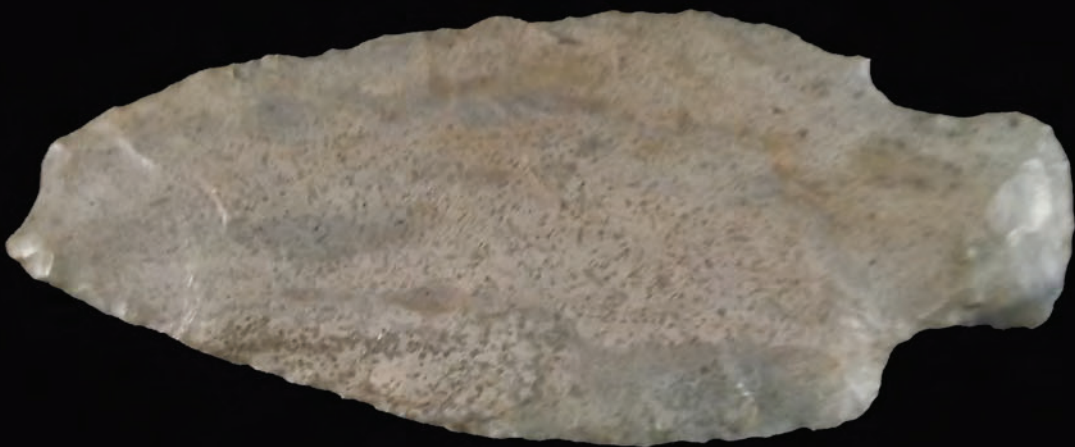


CM



2.42

**Early / Middle Woodland, Robins projectile
point, heat-treated Maynes Creek variety chert**

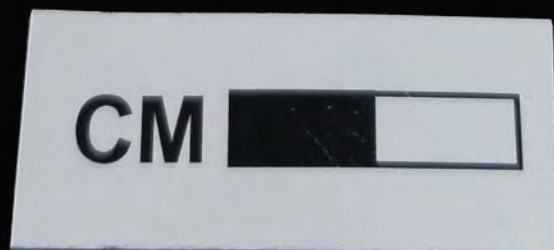


CM



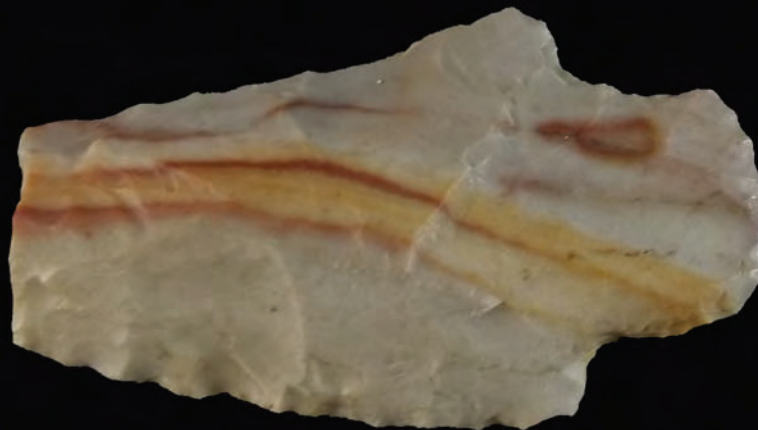
2.43

**Early / Middle Woodland, Robins projectile
point, heat-treated Maynes Creek variety chert**

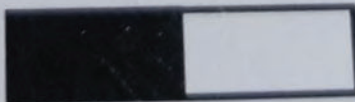


2.44

**Early / Middle Woodland, Dickson projectile
point, heat-treated Warsaw Tabular chert**



CM



2.45

**Early / Middle Woodland, Robins projectile
point, heat-treated Maynes Creek variety chert**



CM



2.46

**Late Archic, Durst projectile point, heat-treated
Maynes Creek variety chert**



CM

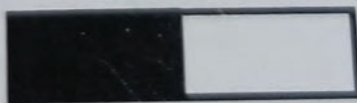


2.47

**Late Archaic, Durst projectile point, heat-treated
Maynes Creek variety chert**



CM

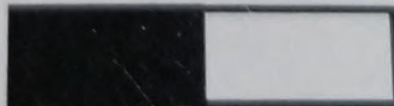


2.48

**Early / Middle Woodland, Dickson projectile
point, heat-treated Croton Chalcedonic**



CM

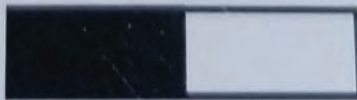


2.49

**Late Archaic / Early Woodland, Unidentified
stemmed projectile point, Winterset chert**



CM

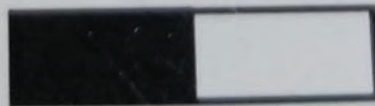


2.50

**Late Archaic, Table Rock projectile point,
midsection and parital proximal end-shoulder
and stem, heat-treated Maynes Creek variety
chert**



CM



2.51

**Middle Archaic, Matanzas projectile point,
heat-treated Maynes Creek variety chert**

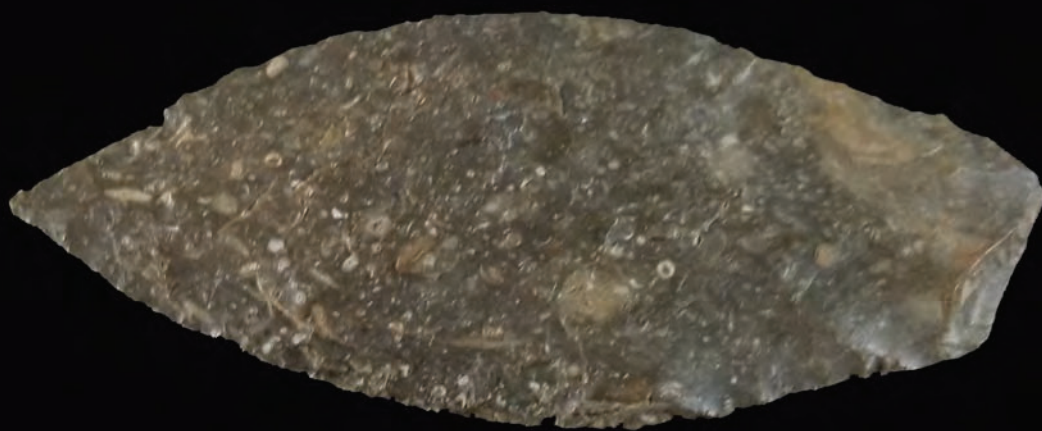


CM



2.52

**Late Paleoindian, Agate Basin projectile point,
distal end, midsection, partial proximal end,
heat-treated Winterset chert**

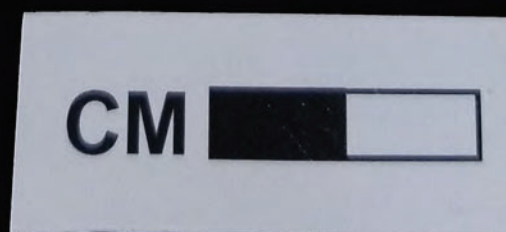


CM



2.53

**Late Archaic, Osceola projectile point, Maynes
Creek variety chert**

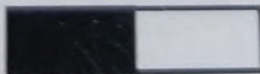


2.54

**Late Archic, Nebo Hill projectile point,
Maynes Creek variety chert**



CM



2.55

**Early / Middle Woodland, Adena-Waubesa
projectile point, Croton Chalcedonic**

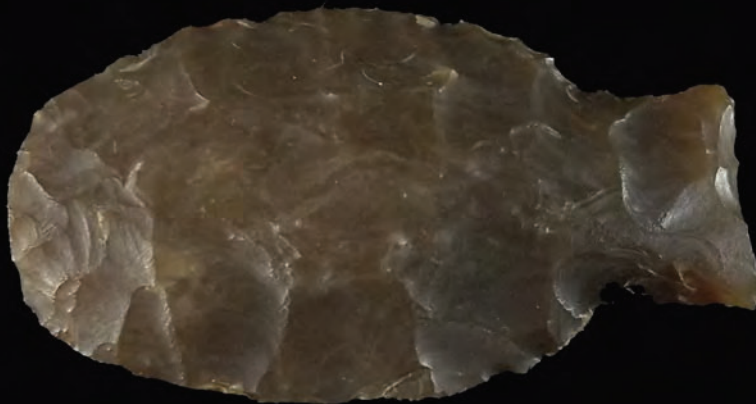


CM



2.56

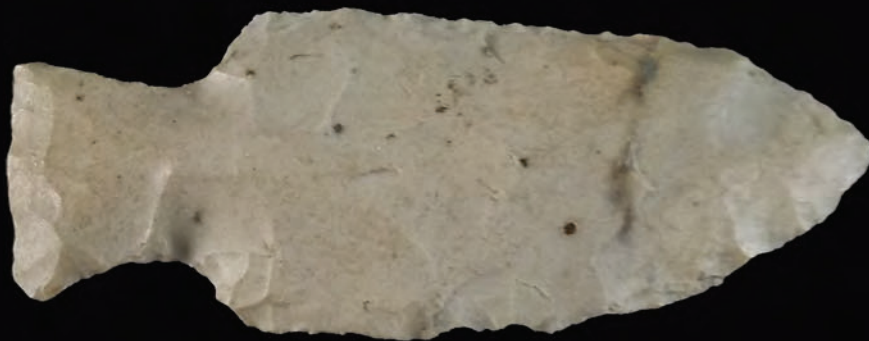
**Late Archaic, Table Rock projectile point, Knife
River Flint**



CM 

2.57

**Late Archaic, Table Rock projectile point,
Maynes Creek variety chert**



CM



2.58

**Early Archaic, Hardin Barbed projectile point,
Maynes Creek variety chert**

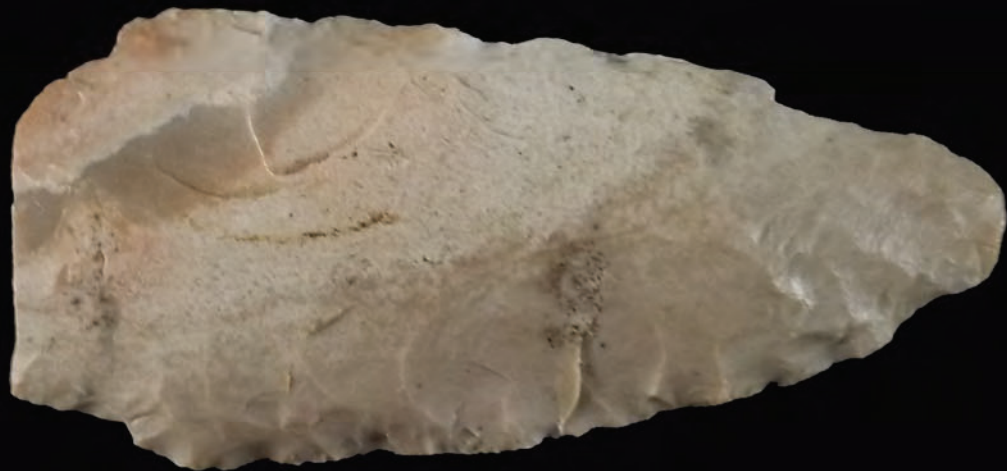


CM



2.59

**Early / Middle Woodland, Adena-Waubesa
projectile point, heat-treated Croton Banded
chert**



CM



2.60

**Early / Middle Woodland, Dickson projectile
point, heat-treated Warsaw Tabular chert**



CM



2.61

**Early / Middle Woodland, Dickson Broad Blade
knife, Cobden-Dongola chert**



CM 

2.62

**Middle Woodland, Gibson projectile point,
Winterset chert**



CM



2.63

**Early / Middle Woodland, Dickson projectile
point, heat-treated Croton Banded chert**



CM



2.64

**Middle Woodland, Snyder projectile point,
midsection and proximal end, heat-treated
Winterset chert**



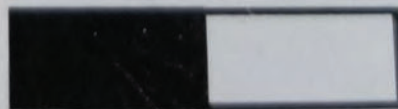
CM 

2.65

**Early / Middle Woodland, Adena-Waubesa
projectile point, distal end, midsection, partial
proximal end-shoulder, heat-treated Maynes
Creek variety chert**

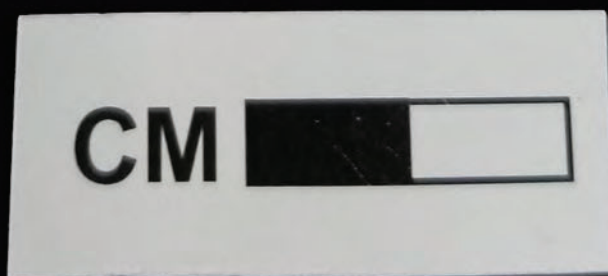


CM



2.66

**Middle Woodland, Steuben-Lowe projectile
point, heat-treated, glacial till chert**



2.67

**Late Prehistoric, Alba Cluster projectile point,
unidentified Pennsylvanian chert**



CM



2.68

**Early / Middle Woodland, Dickson projectile
point, distal end, midsection, partial proximal
end-shoulder and barb, Winterset chert**



CM



2.69

**Late Archaic / Early Late Woodland, Pelican
Lake projectile point, heat-treated Croton
Chalcedonic**



CM



2.70

**Biface fragment, heat-treated Croton Banded
chert**



CM



2.71

**Early / Middle Woodland, Adena-Waubesa
projectile point, heat-treated Maynes Creek
variety chert**

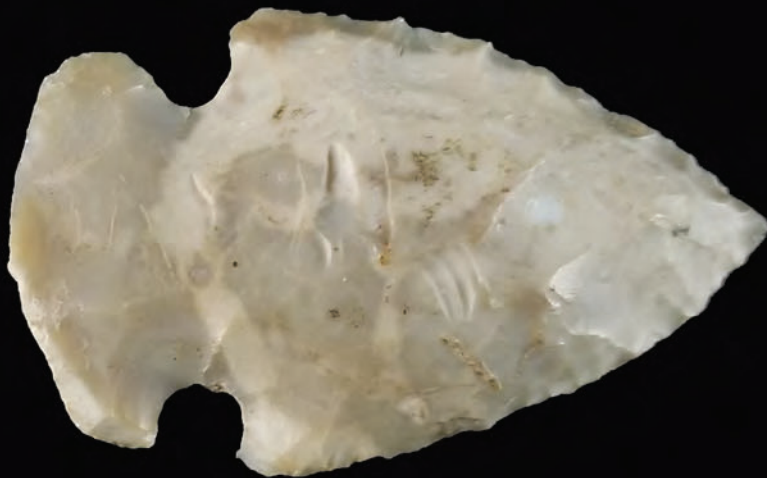


CM



2.72

**Middle Woodland, Manker projectile point,
Winterset chert**



CM



2.73

**Late Archaic / Early Late Woodland, Pelican
Lake projectile point, heat-treated Maynes
Creek variety chert**



CM



2.74

Early / Middle Woodland, Dickson projectile point, distal end, midsection, partial proximal end-shoulder and barb, heat-treated Maynes Creek variety chert



CM 

2.75

**Late Woodland / Late Prehistoric, Madison
projectile point, Maynes Creek variety chert**



CM



2.76

**Sandstone abrader, V - shaped grooves for
bone needles or awls**

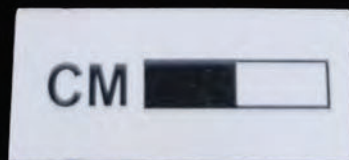


CM



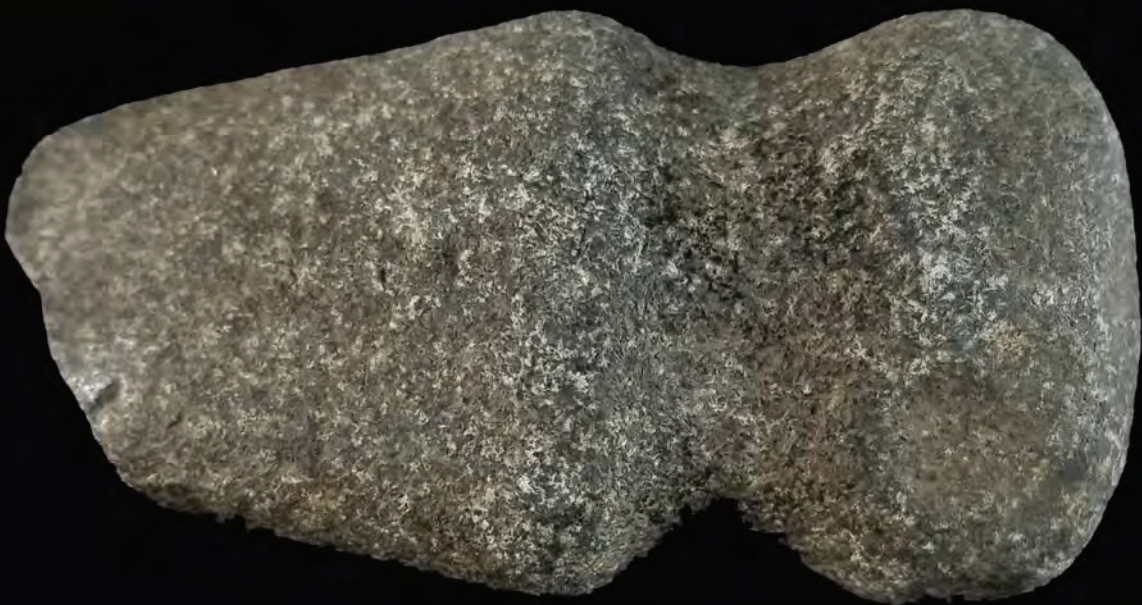
2.77

**Middle Archaic, butterfly bannerstone blank, no
elongated, cylindrical, central drilled hole,
Diorite**



2.78

**Middle / Late Archaic, fully grooved axe,
battered rounded-polled, Gabbro**



CM



2.79

**Middle / Late Archaic, fully grooved axe,
battered rounded-polled, polished bit surface,
Gabbro**



CM



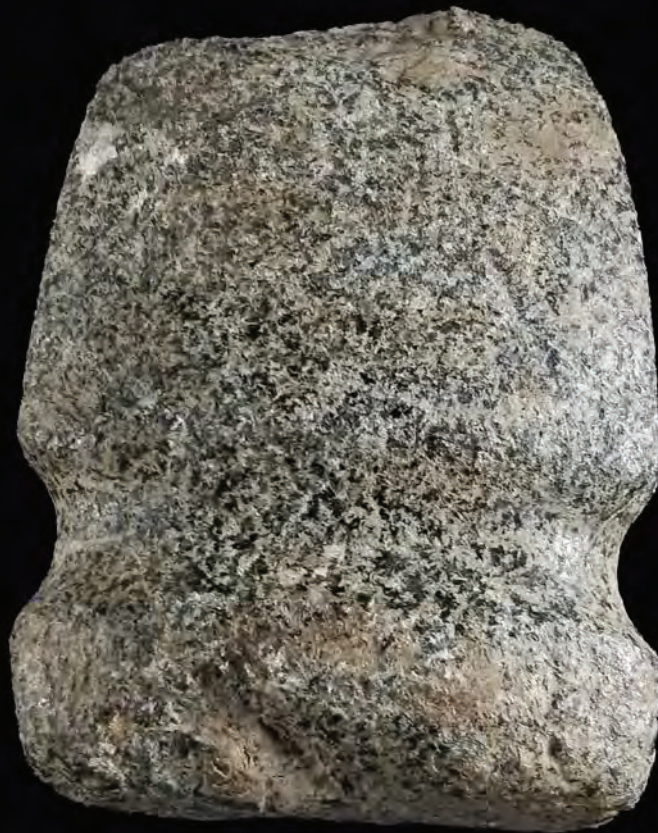
2.80

**Fully grooved hand axe, unworked flat-polled,
bit end pecking and ginding with polishing,
Igneous**



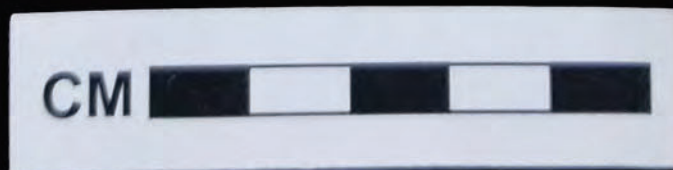
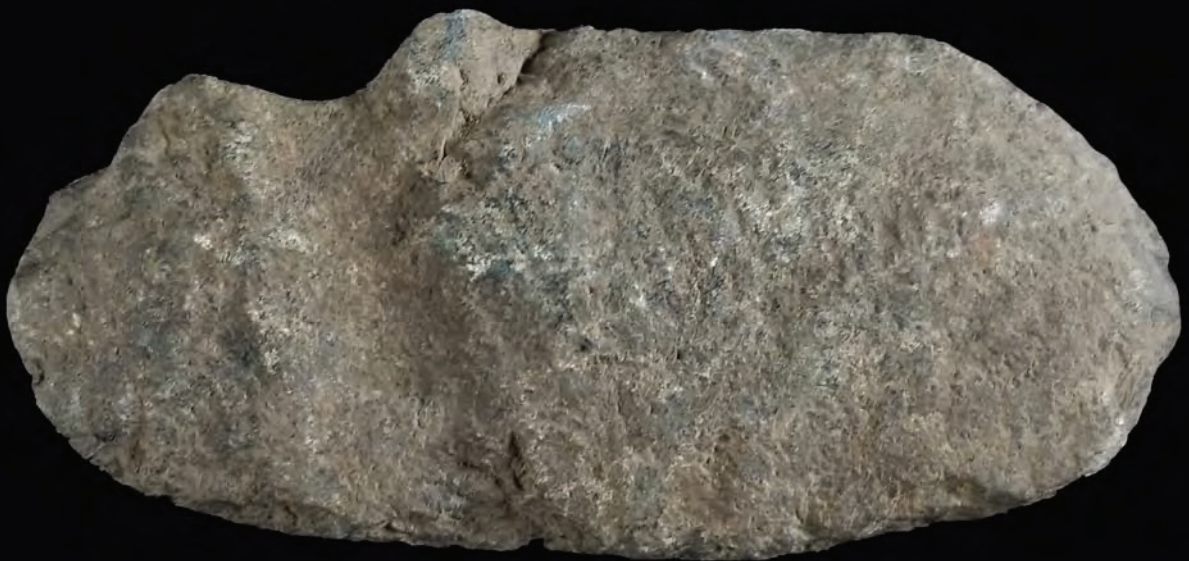
2.81

**Middle Archaic, fully grooved axe, flat-polled,
bit end damage, Gabbro**



2.82

**Middle / Late Archaic, three-quarter grooved
axe, rounded-polled, Granite**



2.83

**Middle / Late Archaic, three-quarter grooved
axe, rounded-polled, Granite**

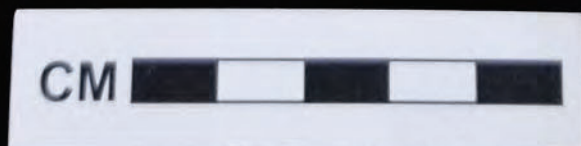
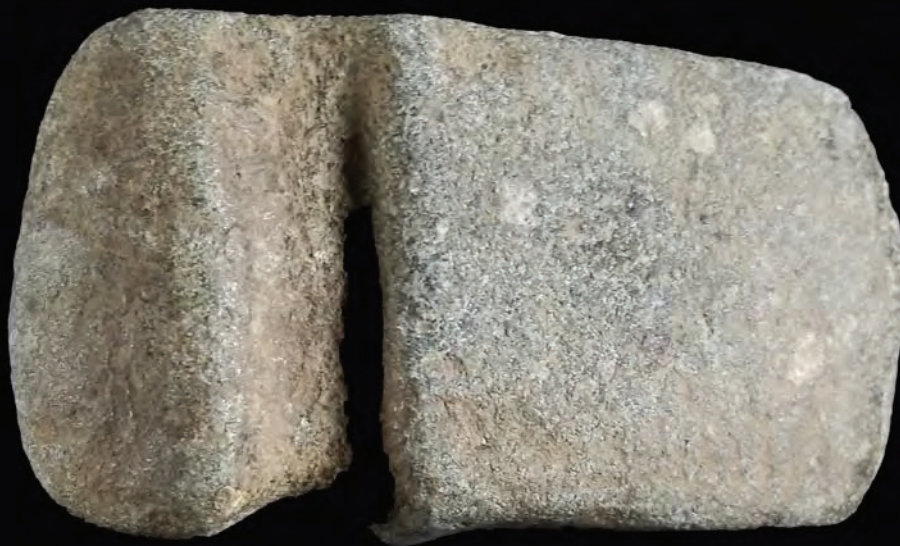


2.84



2.85

**Middle / Late Archaic, three-quarter grooved
axe, battered rounded-polled, Granite**



2.86

**Middle / Late Archaic, three-quarter grooved
axe, rounded-polled, Granite**



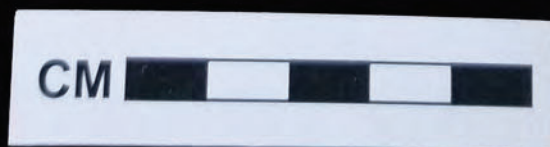
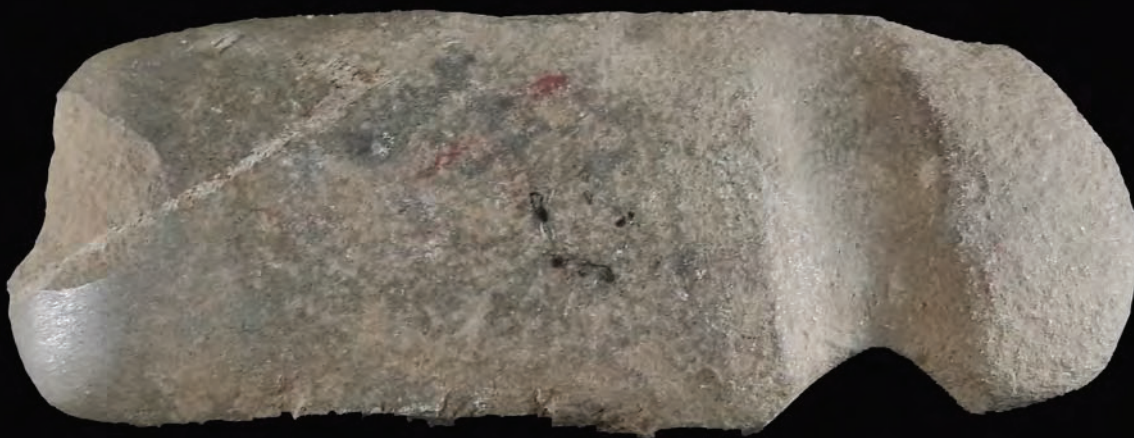
2.87

**Middle / Late Archaic, three-quarter grooved
axe, flat-polled, Dacite**



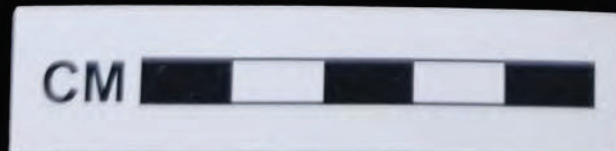
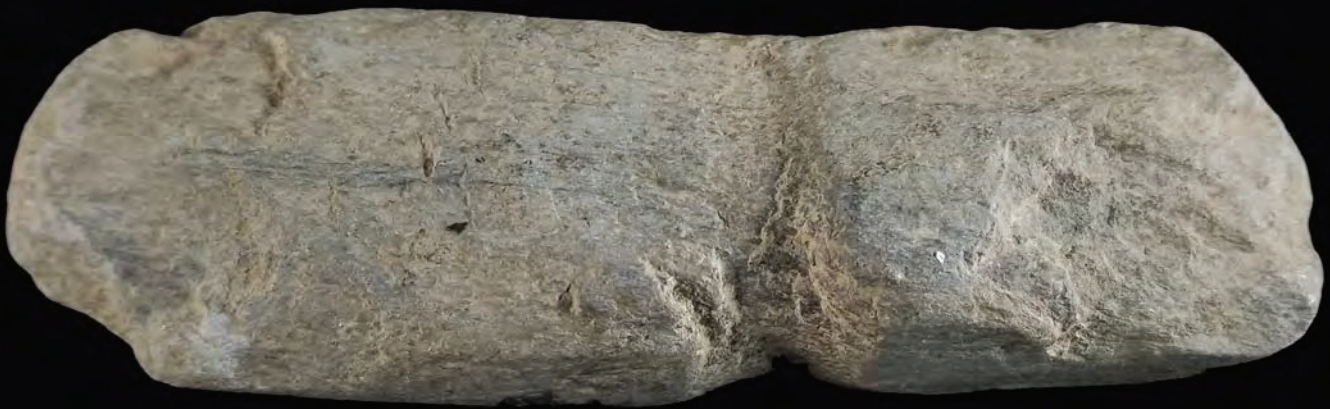
2.88

**Middle / Late Archaic, three-quarter grooved
axe, rounded-polled, Igneous**



2.89

**Axe blank, early-stage three-quarter grooved,
unmodified bit and poll ends, Igneous**



2.90

**Middle / Late Archaic, three-quarter grooved
axe, flat-polled, Granite**



2.91

**Middle / Late Archaic, three-quarter grooved
axe, battered rounded-polled, grinding and
polishing surfaces, Granite**



2.92

**Middle / Late Archaic, three-quarter grooved
axe, flat-polled, polished surfaces, Granite**



2.93

**Middle / Late Archaic, three-quarter grooved
axe, rounded-polled, polished surface, Granite**



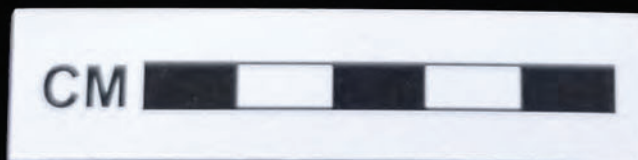
2.94

**Middle / Late Archaic, flat-polled, three-quarter
grooved axe, Igneous, shellac application on
exterior surface**



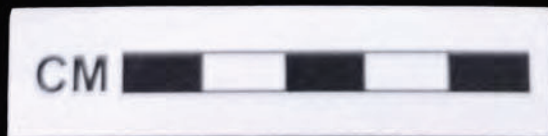
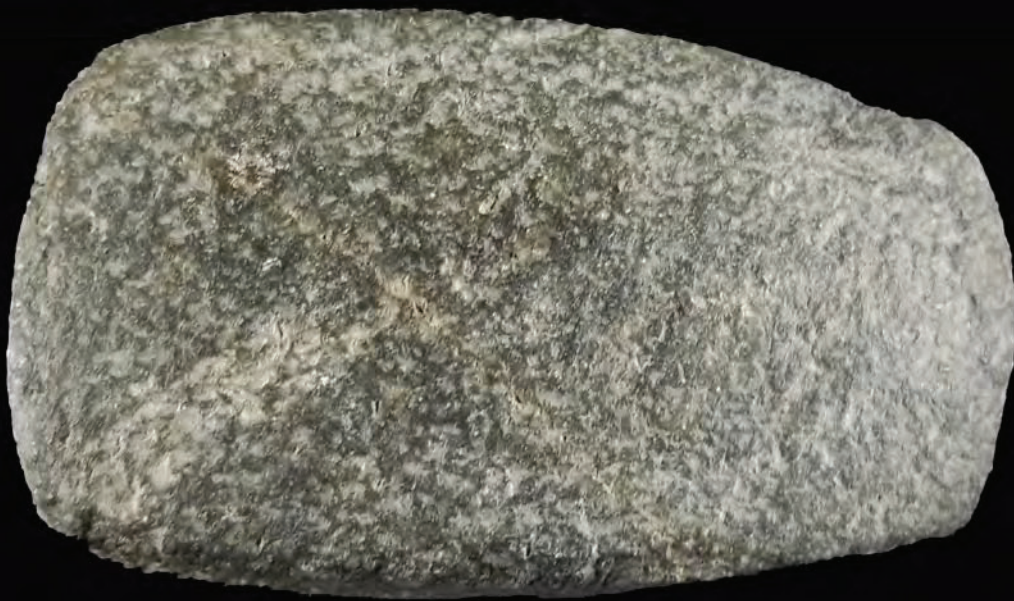
2.95

**Ungrooved axe, rounded-polled, surface edge
pecking and grinding, Igneous**



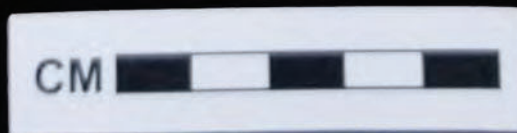
2.96

**Axe blank, top and bottom surface edge
pecking and grinding, Igneous**



2.97

Axe blank, top, bottom surface pecking and grinding, poll end pecking and shaping, bit end grinding present, Igneous



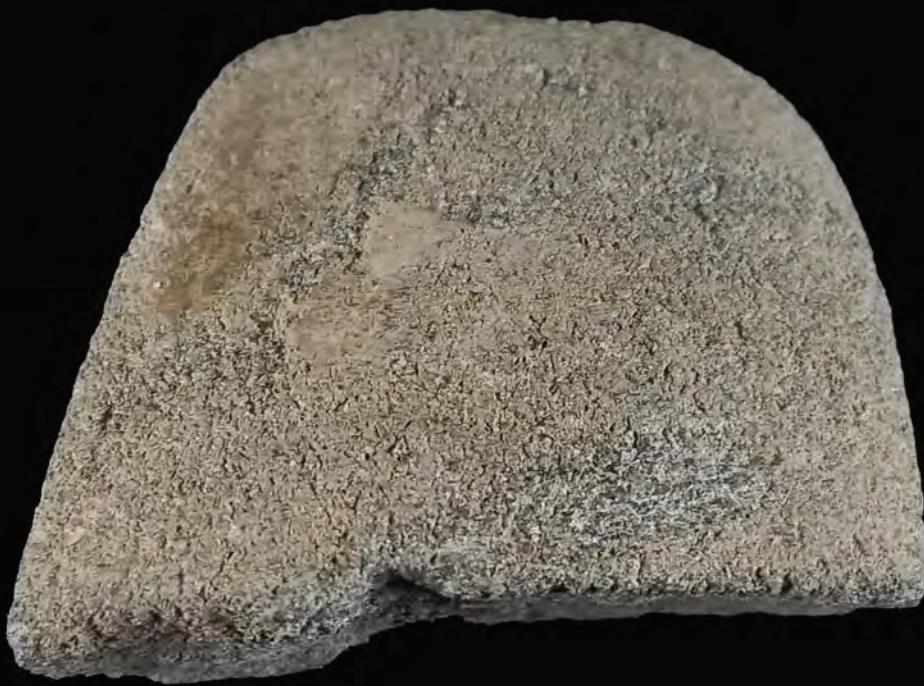
2.98

**Axe blank, flat-polled, top and bottom pecking
and grinding, bit end grinding, Gabbro**



2.99

Axe fragment, bit edge and face, Igneous



2.100

**Middle / Late Archaic, rounded polled,
three-quarter grooved axe, Igneous**



2.101

**Fully grooved maul, rounded-polled, battered
bit end, Granite**



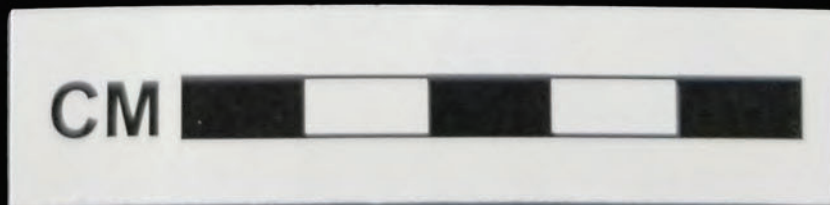
2.102

**Fully grooved maul, battered rounded-polled,
Granite**



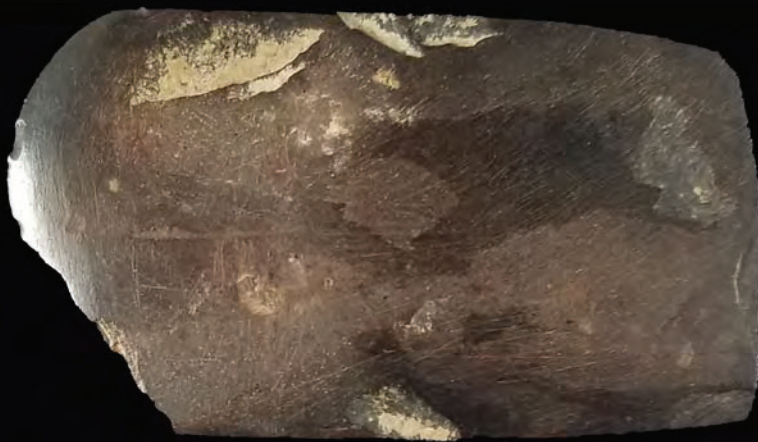
2.103

Oval hematite celt, pointed-polled, rough flaking, polished surface and edge



2.104

**Rectangular hematite celt, flat-polled,
retouched flaking on bit end**

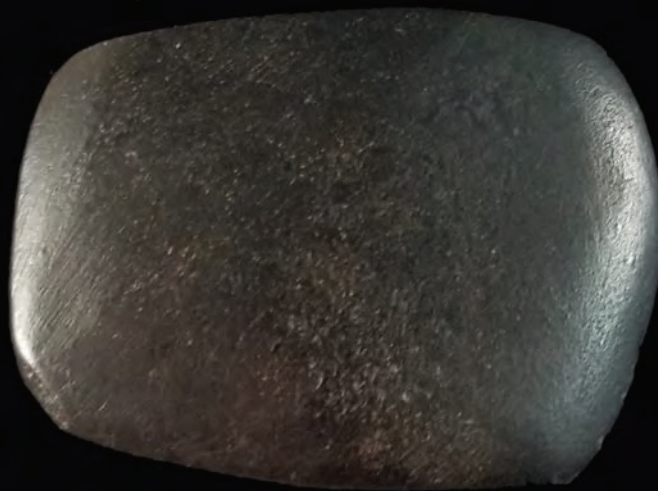


CM



2.105

**Rectangular hematite celt, rounded-poll,
polished surfaces**

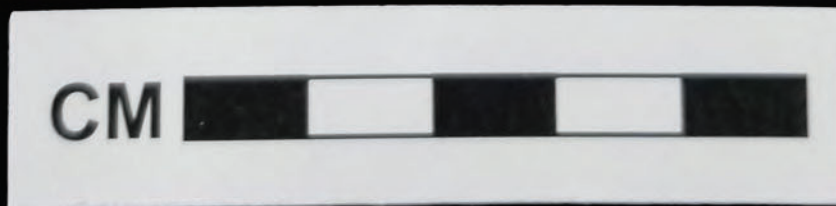
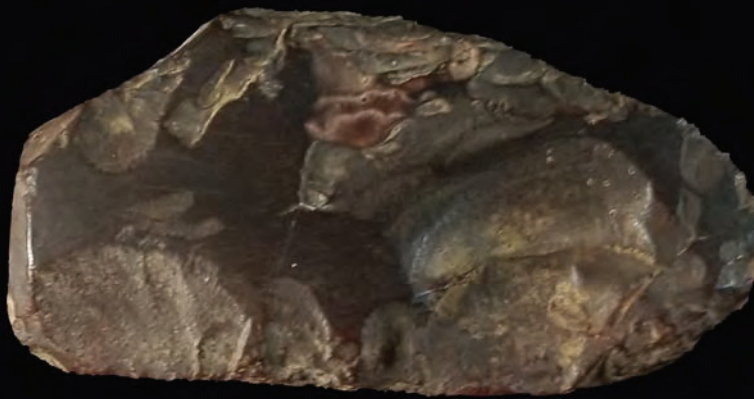


CM



2.106

**Oval hematite celt, flat-polled, rough flaking
edge and surface**



2.107

**Rectangular hematite celt, rounded-polled,
flaking surfaces**

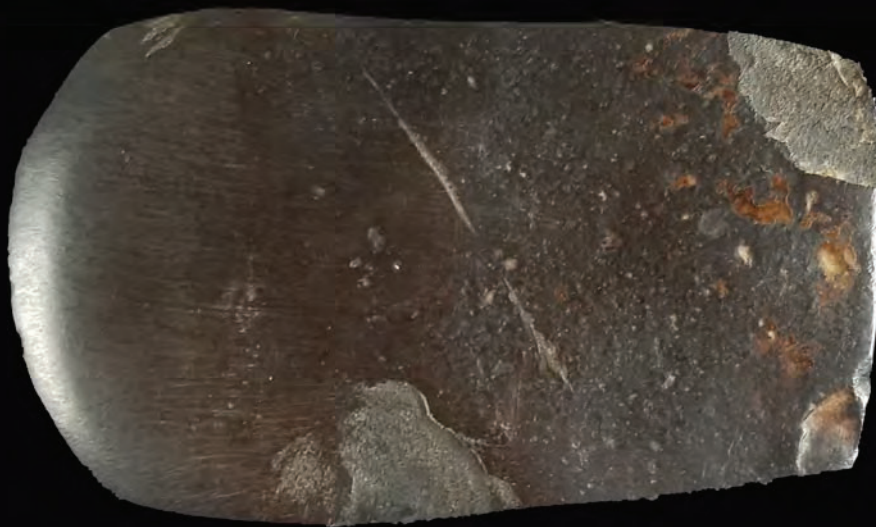


CM



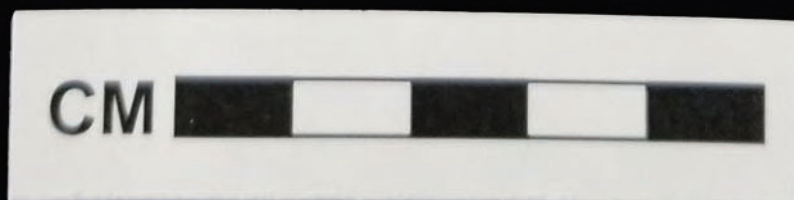
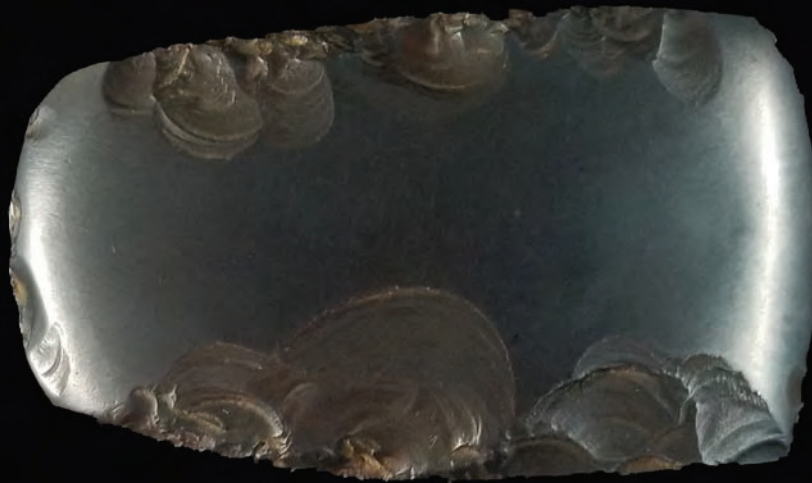
2.108

**Rectangular hematite celt, flat-polled, polished
bit end**



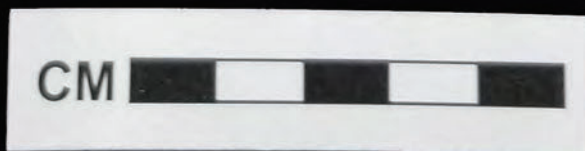
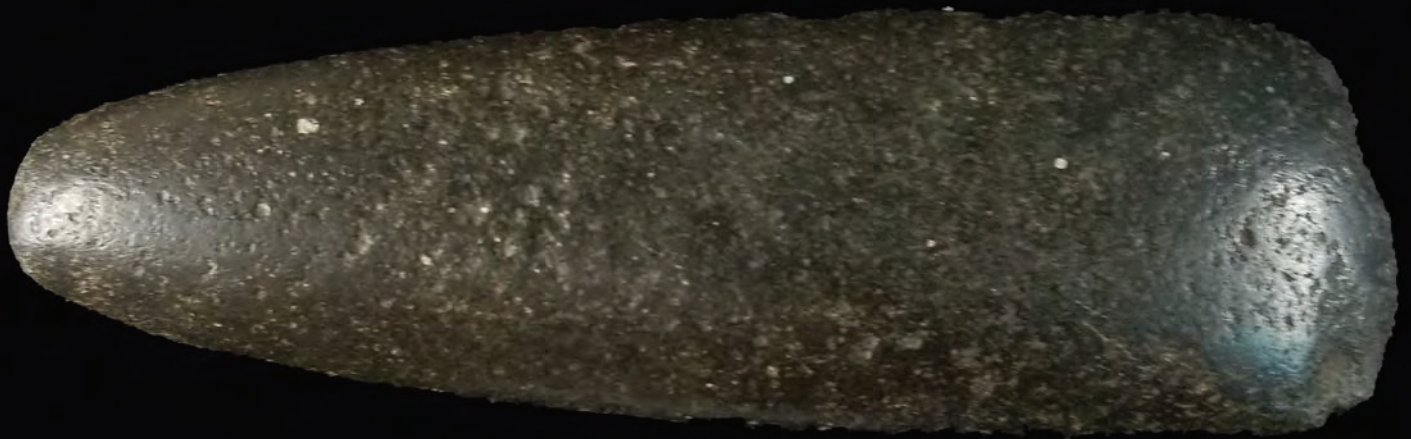
2.109

**Rectangular hematite celt, rounded-polled,
edge flaking, polished surface**



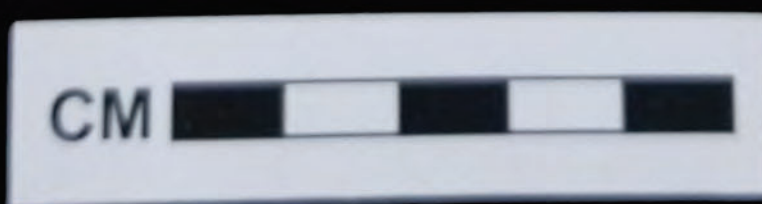
2.110

**Cylindrical pestle or celt, rough surface
pecking, Basalt**



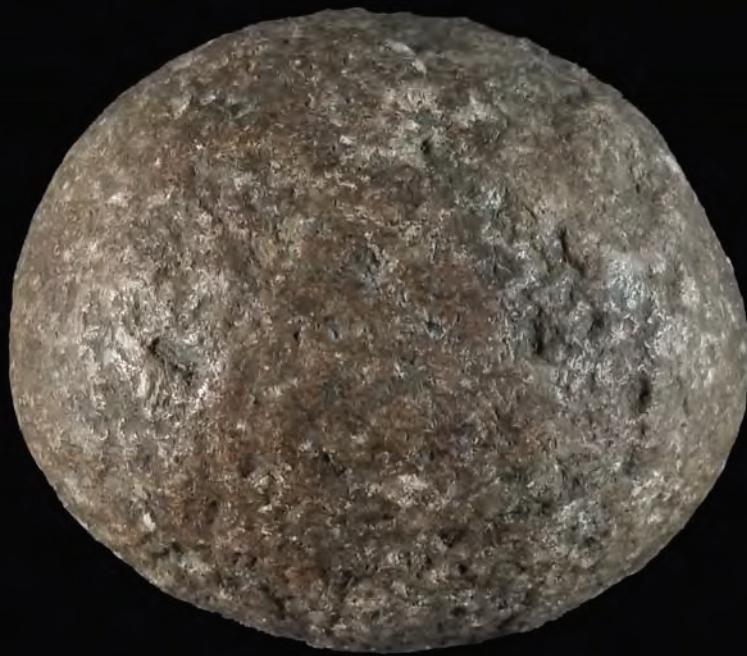
2.111

**Circular hammerstone, edge abrasion,
Igneous**



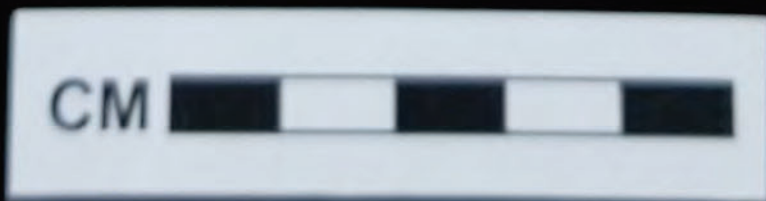
2.112

**Oval hammerstone, pitting and edge abrasion,
Igneous**



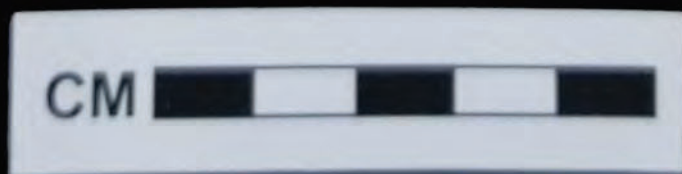
2.113

Circular hammerstone, pitted and edge abrasion, Igneous



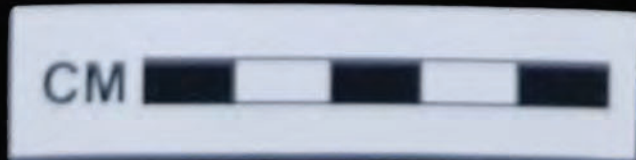
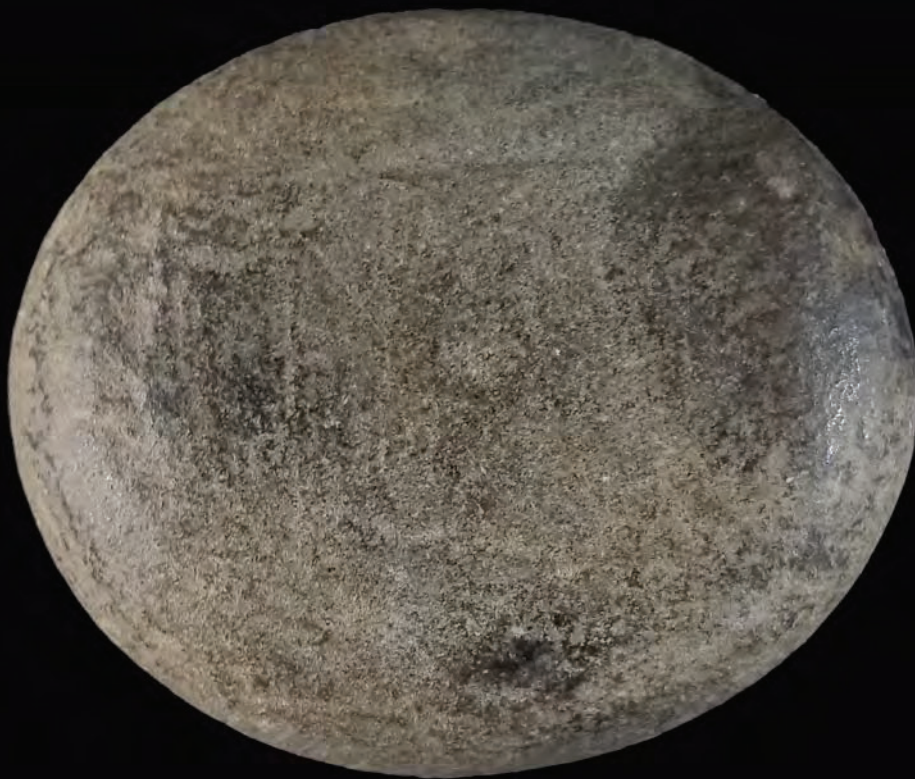
2.114

**Circular hammerstone, edge abrasion,
Igneous**



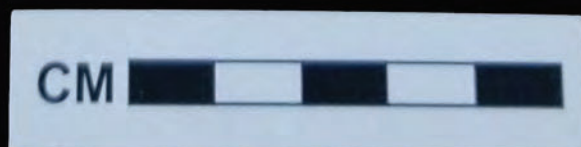
2.115

**Circular grinding and pecking stone, surface
abrasion and polishing, pitted edge, heat
exposure, Igneous**



2.116

**Oval grinding stone, surface abrasion and
polishing, Igneous**



2.117

**Rectangular grinding stone, surface abrasion
and polishing, Igneous**



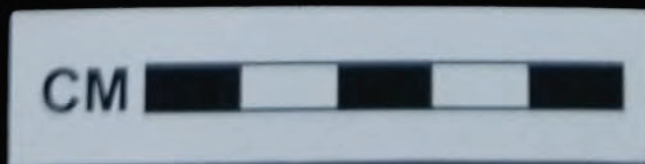
2.118

**Rectangular grinding stone, surface grinding,
top and bottom edge pecking and grinding,
Granite**



2.119

**Rectangular grinding stone, surface grinding,
top and bottom edge pecking and shaping,
Ryolite**



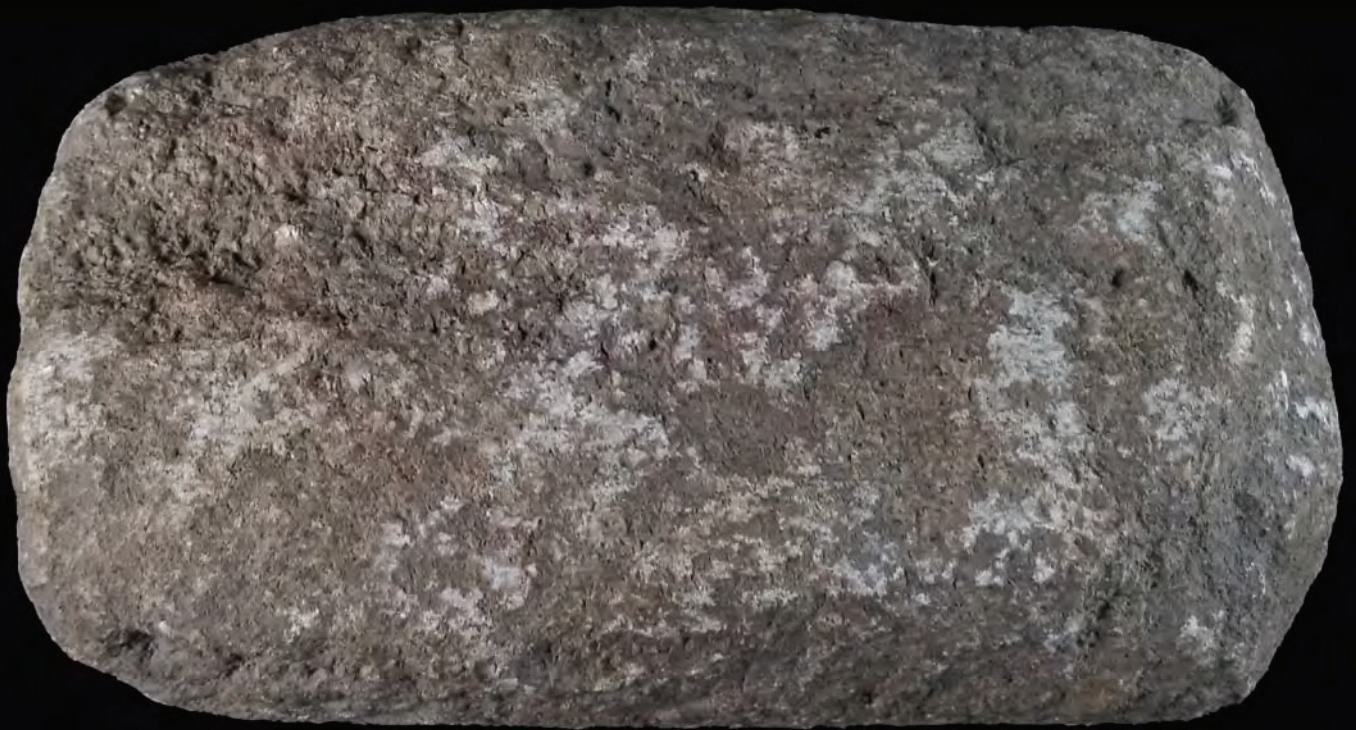
2.120

**Axe blank, surface edge pecking and grinding,
poll end damaged, bit end pecking and
grinding, Igneous**



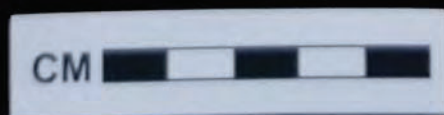
2.121

**Rectangular grinding stone, bottom surface
grinding and polishing, top surface rough
pecking, Igneous**



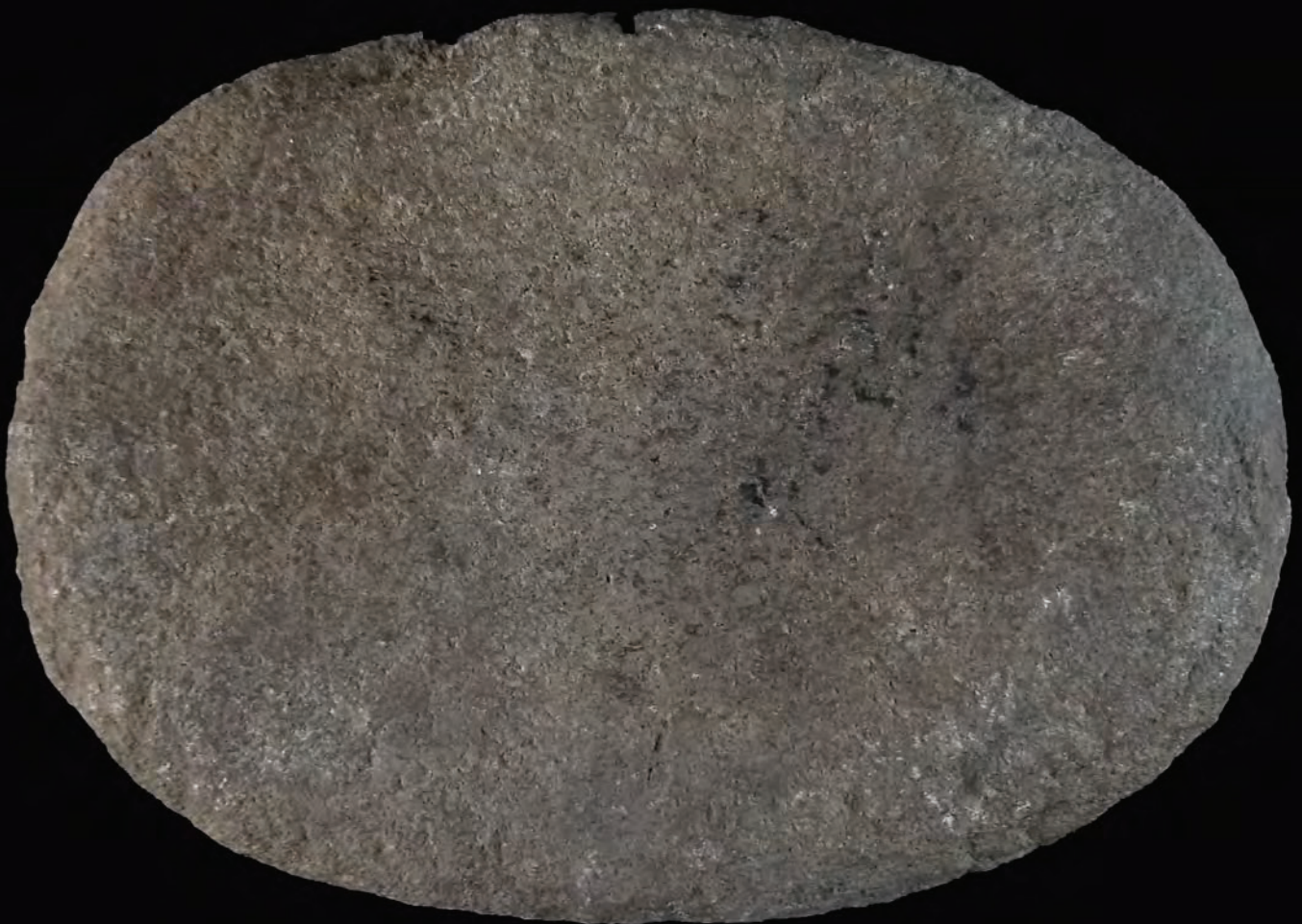
2.122

**Rectangular grinding stone, surface grinding
and polishing, edge pecking and grinding,
Granite**



2.123

**Flat grinding stone, surface grinding and
polishing, edge pecking and grinding, Granite**



2.124

Stone disc, pecked, Garbbro

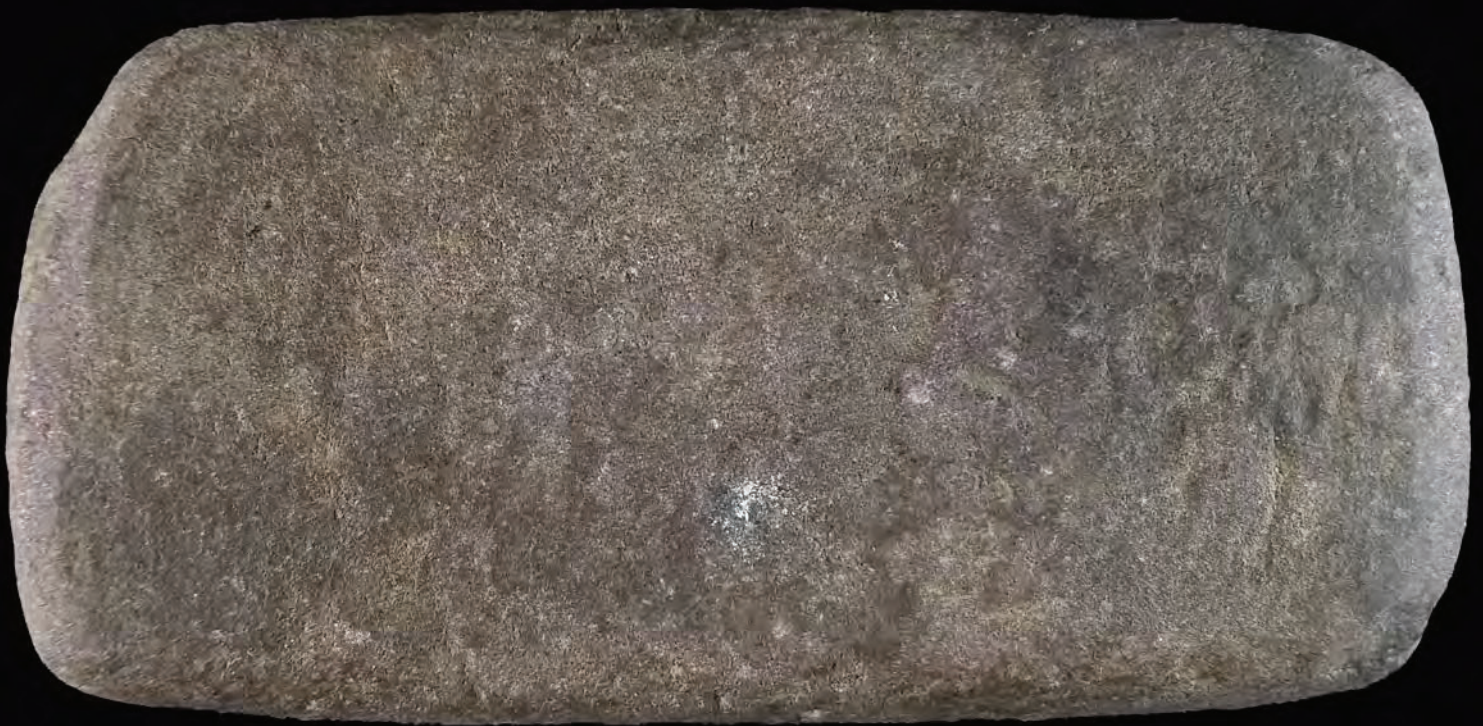


CM



2.125

**Rectangular grinding stone or axe blank,
grinding and pecking evident along edges,
Igneous**



2.126

Metate



2.127

Molten soft lead



CM



2.128

44 caliber, (.433" diameter) lead ball



CM



2.129

**Iron, scissor type, musket ball single cavity,
round ball mould**



CM



2.130

Fire-cracked rock



CM

