

6.150

**Unidentified projectile point midsection,
heat-treated Maynes Creek variety chert**

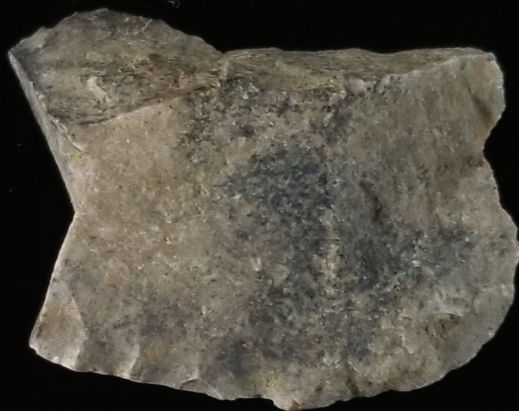


CM



6.151

Biface fragment, Glacial till chert

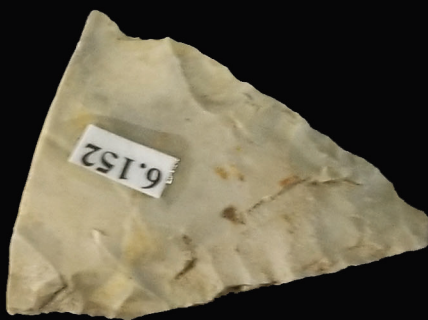


CM



6.152

**Biface fragment, heat-treated Croton Banded
chert**



CM



6.153

Biface fragment, Burlington chert

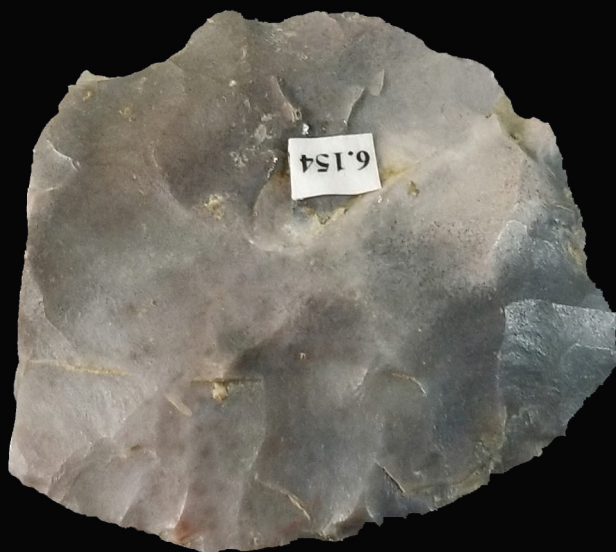


CM



6.154

Biface fragment, Croton Chalcedony



CM



6.155

**Biface fragment, heat-treated Croton Banded
chert**

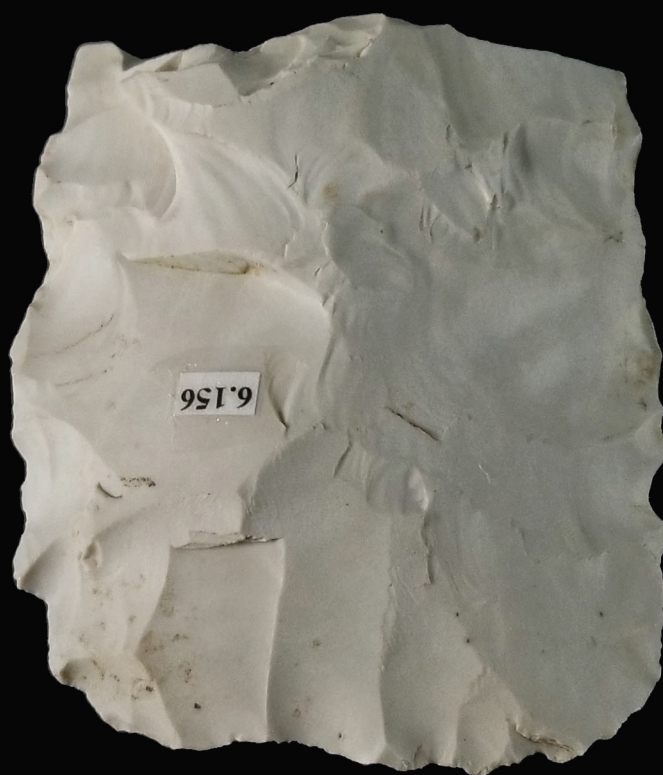


CM



6.156

Paloeindian late-stage biface, overshoot flake removal, Burlington chert

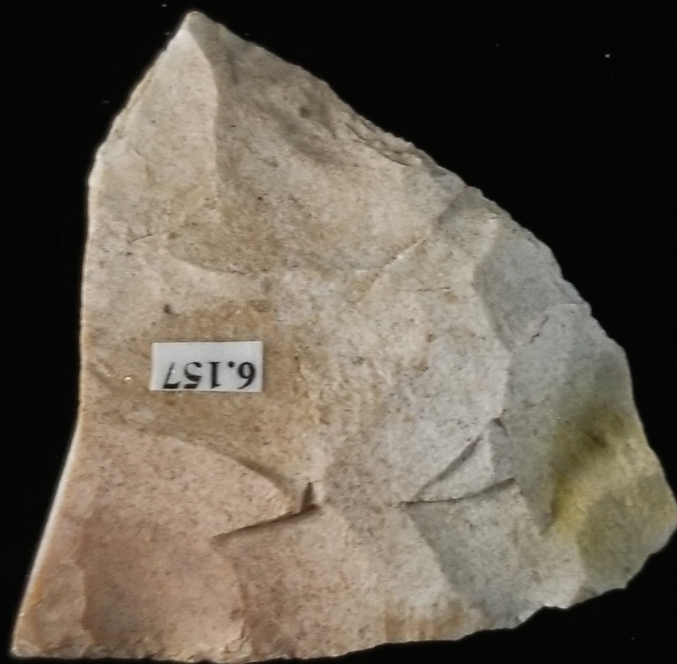


CM



6.157

**Biface fragment, heat-treated Maynes Creek
variety chert**



CM



6.158

**Biface fragment, heat-treated Warsaw Tabular
chert**



CM



6.159

**Biface fragment, heat-treated Maynes Creek
variety chert**



CM



6.160

Biface, heat-treated Warsaw Tabular chert



CM



6.161

**Biface fragment, heat-treated Maynes Creek
variety chert**



CM



6.162

Biface fragment, Croton Banded chert



CM



6.163

Biface fragment, heat-treated Croton Banded
chert



CM



6.164

**Unidentified projectile point midsection,
Burlington chert**



CM



6.165

**Unidentified projectile point distal end-tip,
heat-treated Maynes Creek variety chert**



CM



6.166

**Unidentified projectile point proximal end-base,
Maynes Creek variety chert**



CM



6.167

Unidentified projectile point midsection, Maynes
Creek variety chert



CM



6.168

**Biface fragment, heat-treated Warsaw Tabular
chert**

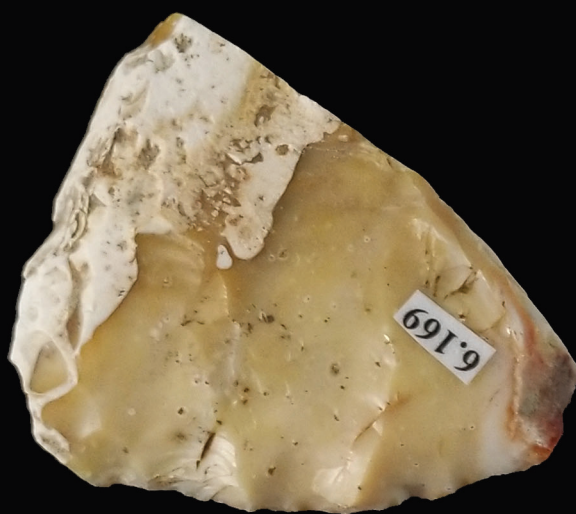


CM



6.169

**Biface fragment, heat-treated Maynes Creek
variety chert**



CM



6.170

Biface fragment, Croton Banded chert

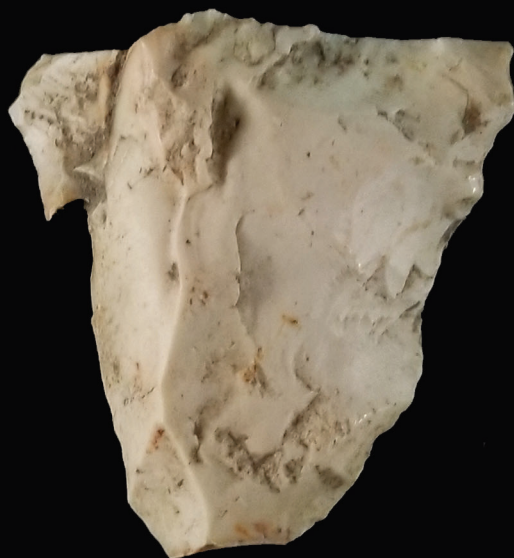


CM



6.171

**Biface fragment, heat-treated Maynes Creek
variety chert**



CM



6.172

**Biface fragment, distal end, heat-treated Maynes
Creek variety chert**



CM

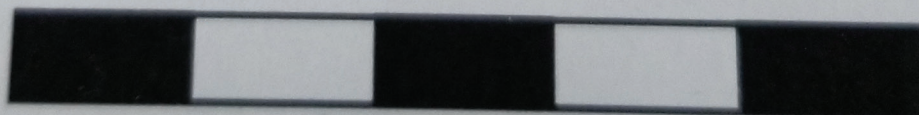


6.173

Biface fragment, Glacial till chert



CM



6.174

**Biface fragment, heat-treated Maynes Creek
variety chert**

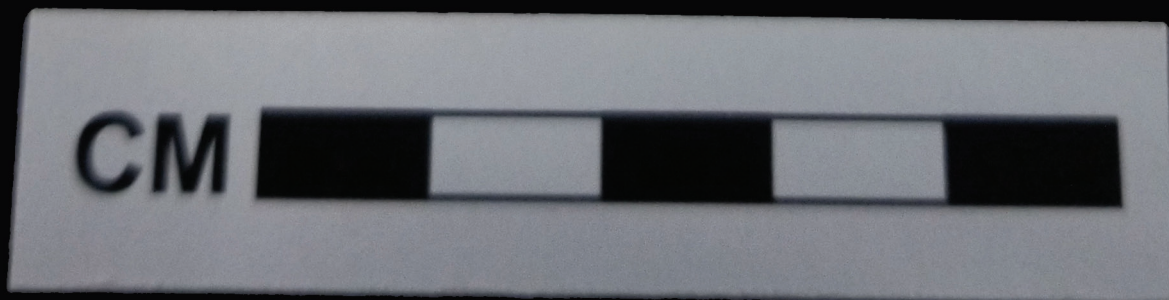


CM



6.175

Core fragment, Croton formation



6.176

Unidentified projectile point midsection and proximal end, Maynes creek variety chert



CM



6.177

Biface fragment, Maynes Creek variety chert

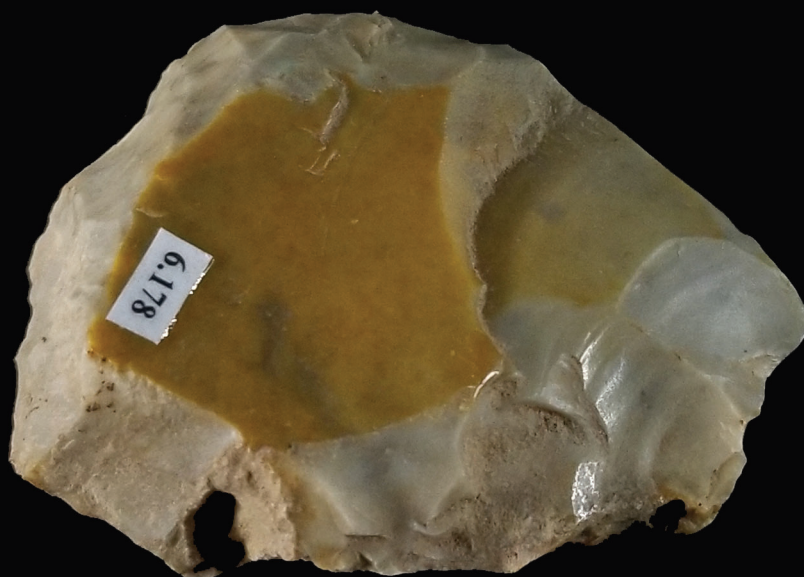


CM



6.178

Biface fragment, Maynes Creek variety chert

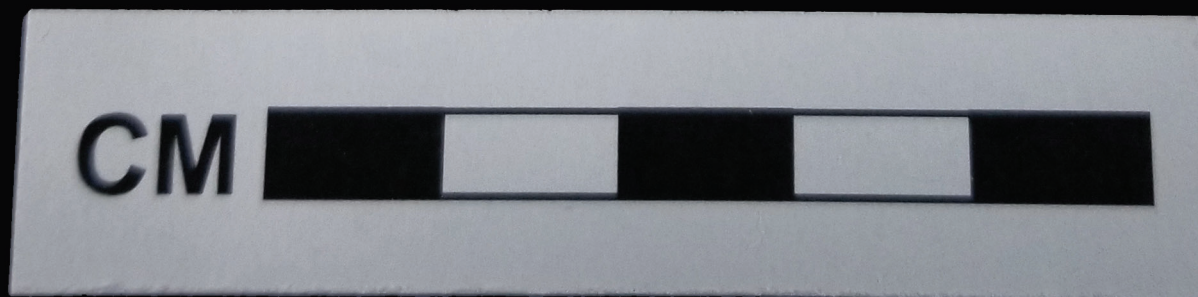


CM



6.179

Biface fragment, Croton Chalcedonic



6.180

Biface, unidentified Pennsylvanian chert



CM



6.181

Biface, heat-treated Maynes Creek variety chert



CM



6.182

Biface, Maynes Creek variety chert



CM



6.183

Biface, Maynes Creek variety chert

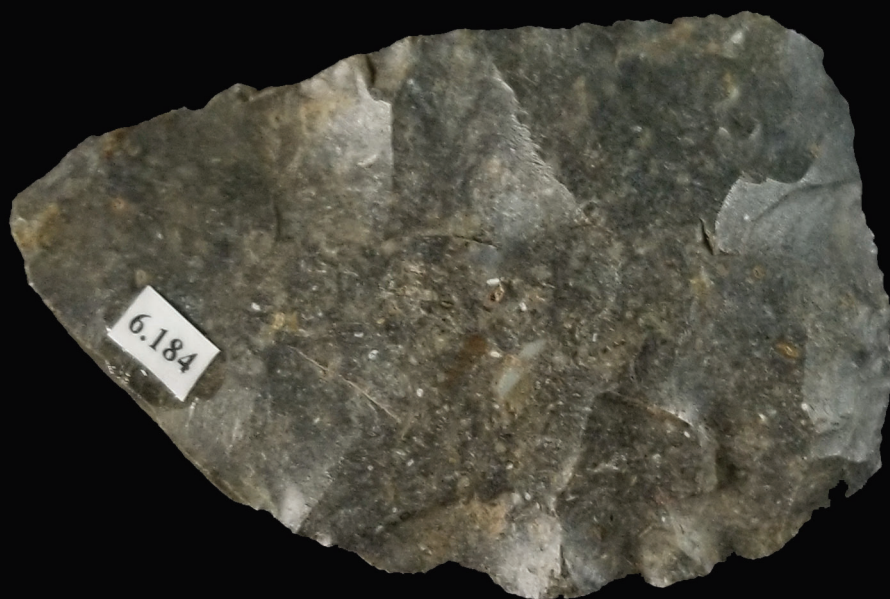


CM



6.184

Biface, heat-treated Winterset chert



CM



6.185

Biface fragment, Croton Banded chert



CM



6.186

Biface, unidentified Pennsylvanian chert

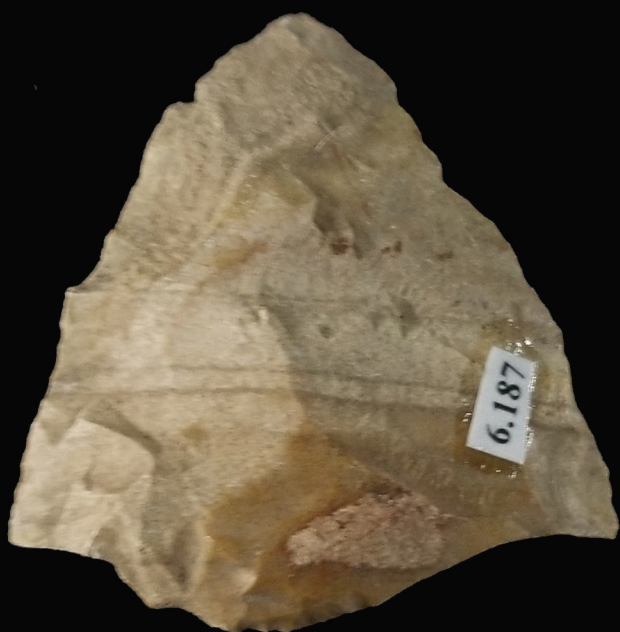


CM



6.187

**Biface fragment, distal end, heat-treated Maynes
Creek variety chert**



CM



6.188

End scraper, Croton Banded chert

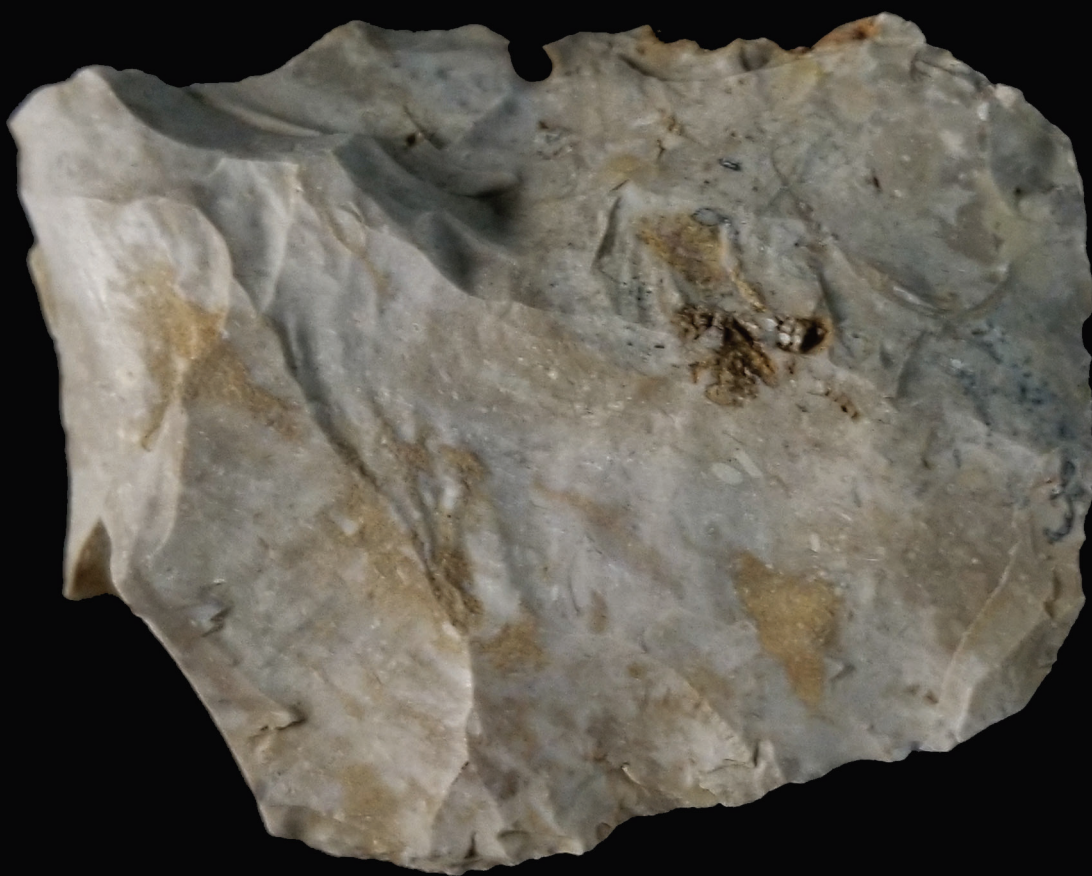


CM



6.189

Biface, Croton Banded chert



CM



6.190

Late-stage biface, Maynes Creek variety chert

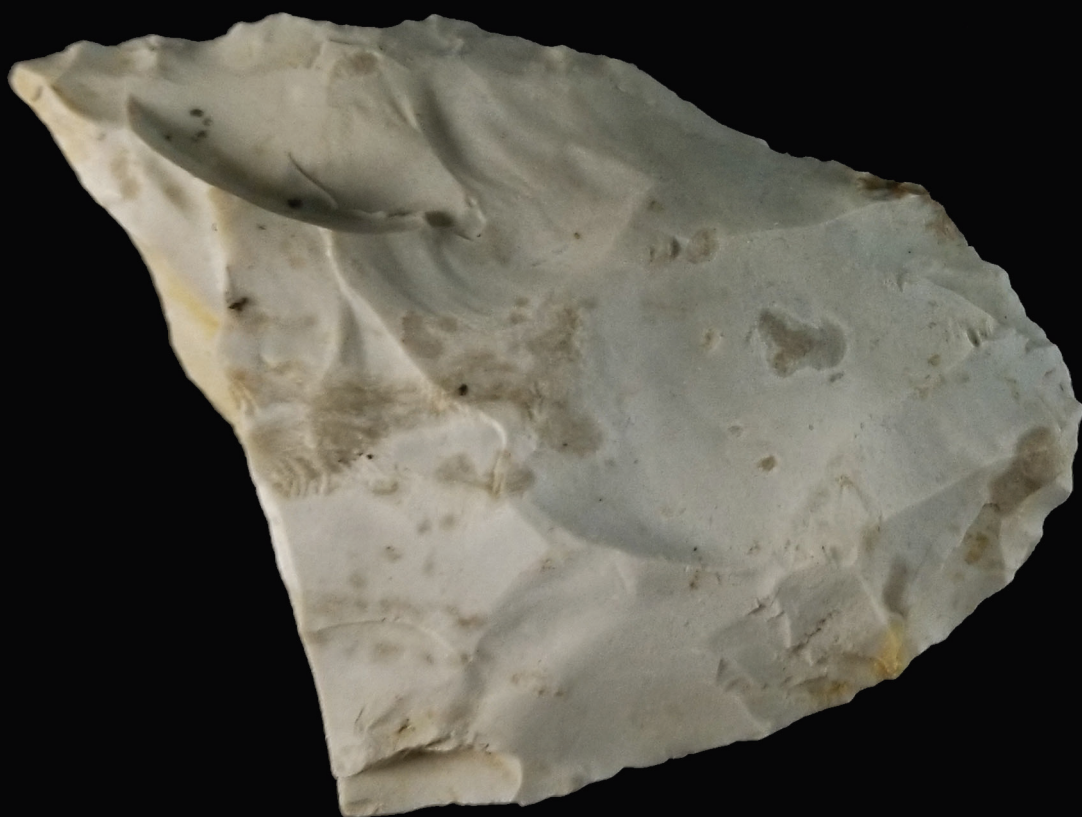


CM

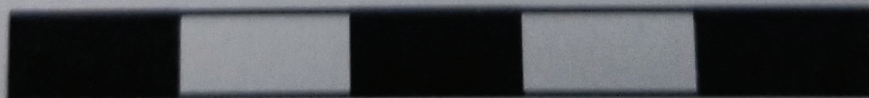


6.191

Biface fragment, Maynes Creek variety chert



CM



6.192

Bifacial knife, Maynes Creek variety chert

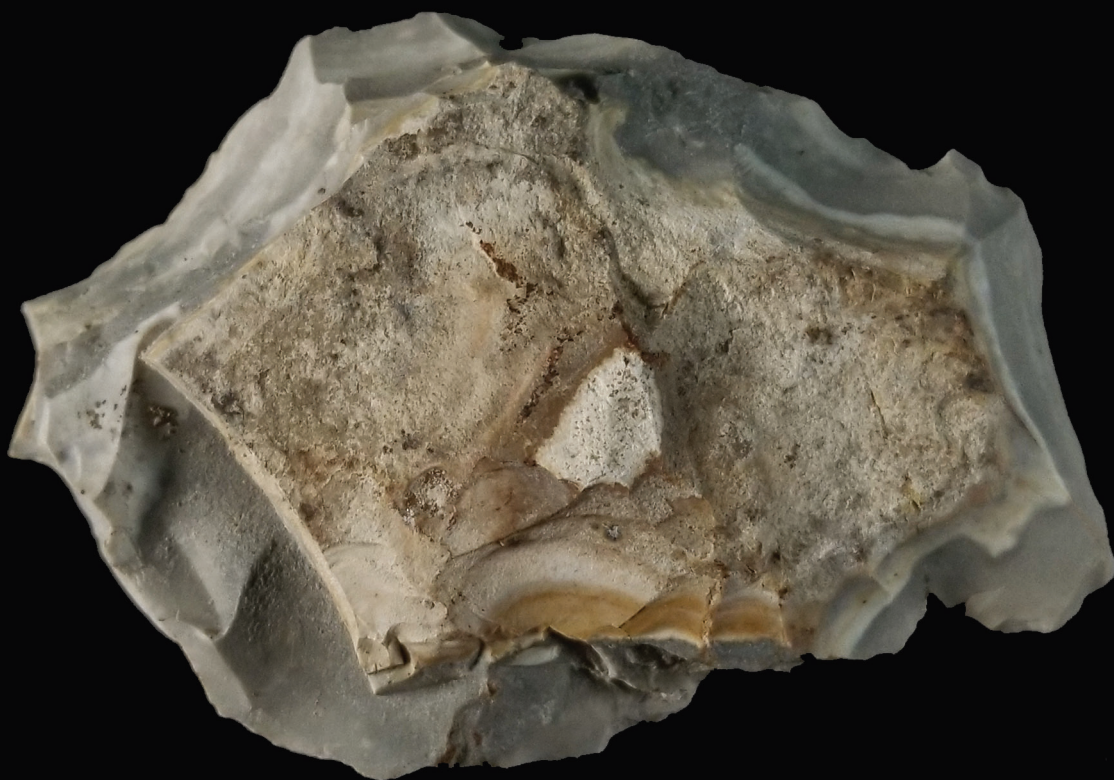


CM



6.193

Core, heat-treated Croton Banded chert



CM



6.194

Core, Maynes Creek variety chert

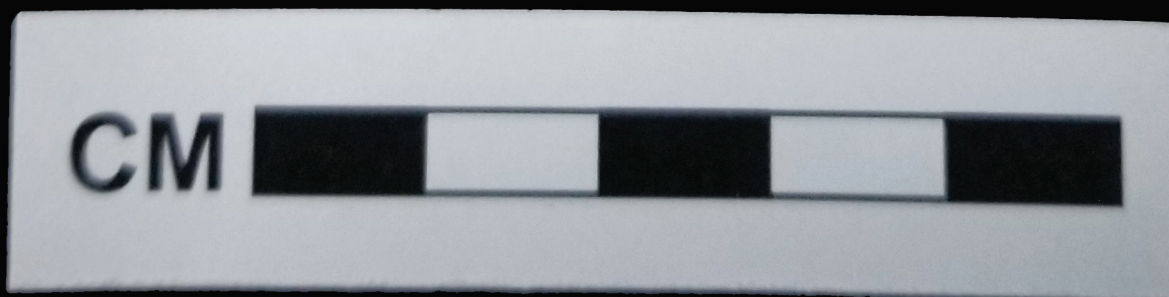
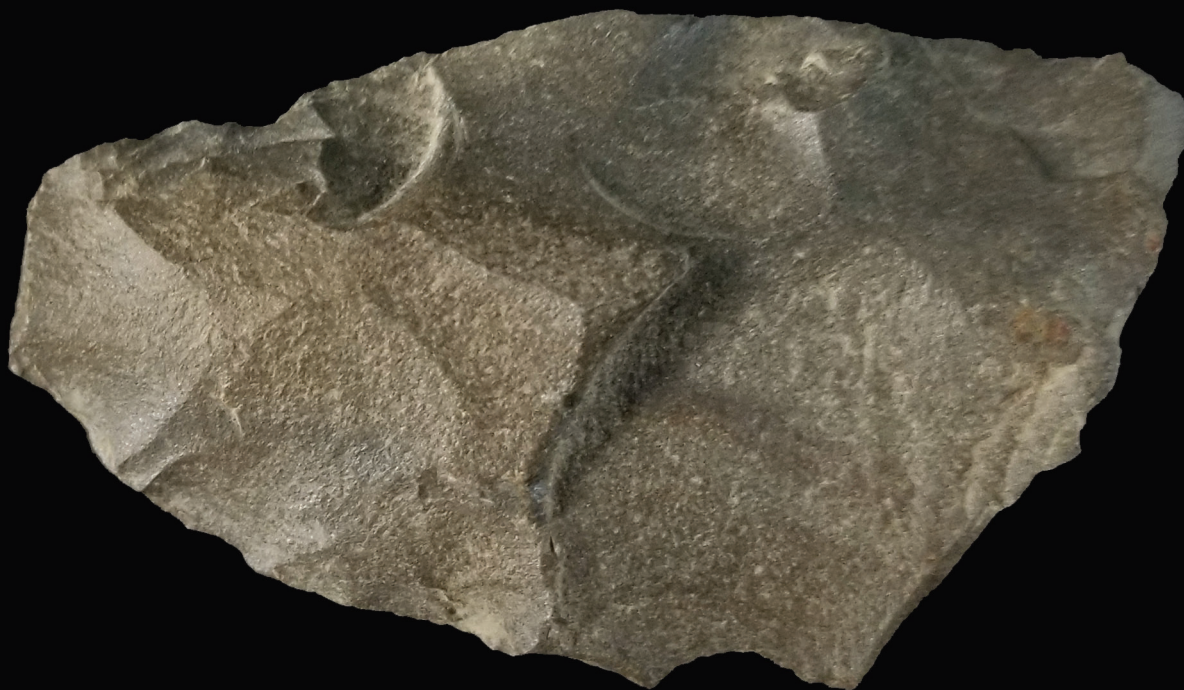


CM



6.195

**Biface fragment, unidentified Pennsylvanian
chert**



6.196

Biface, heat-treated Croton Banded chert

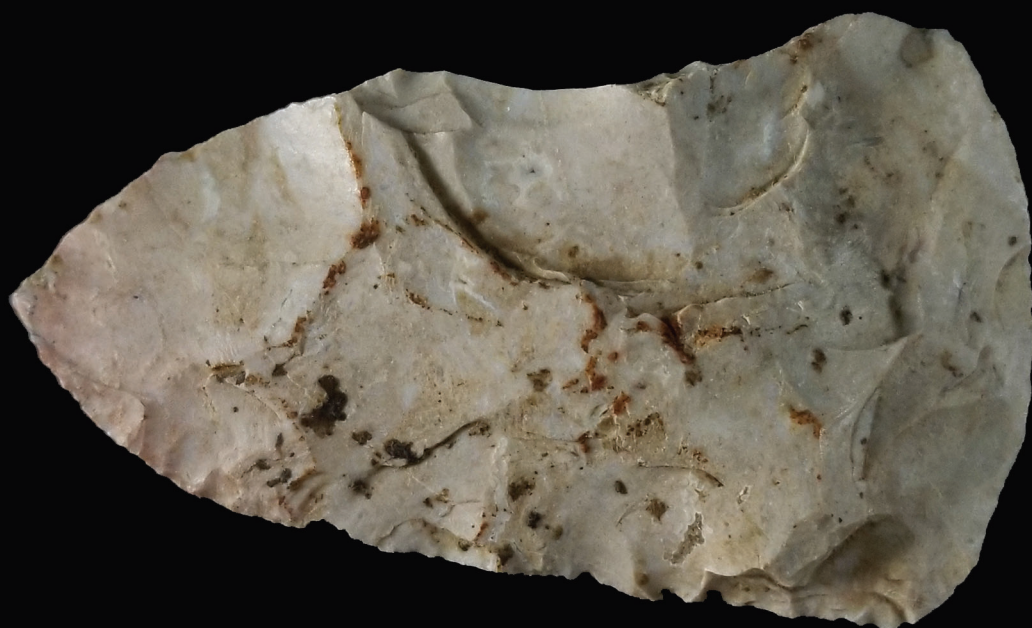


CM



6.197

**Late-stage biface, heat-treated Maynes Creek
variety chert**

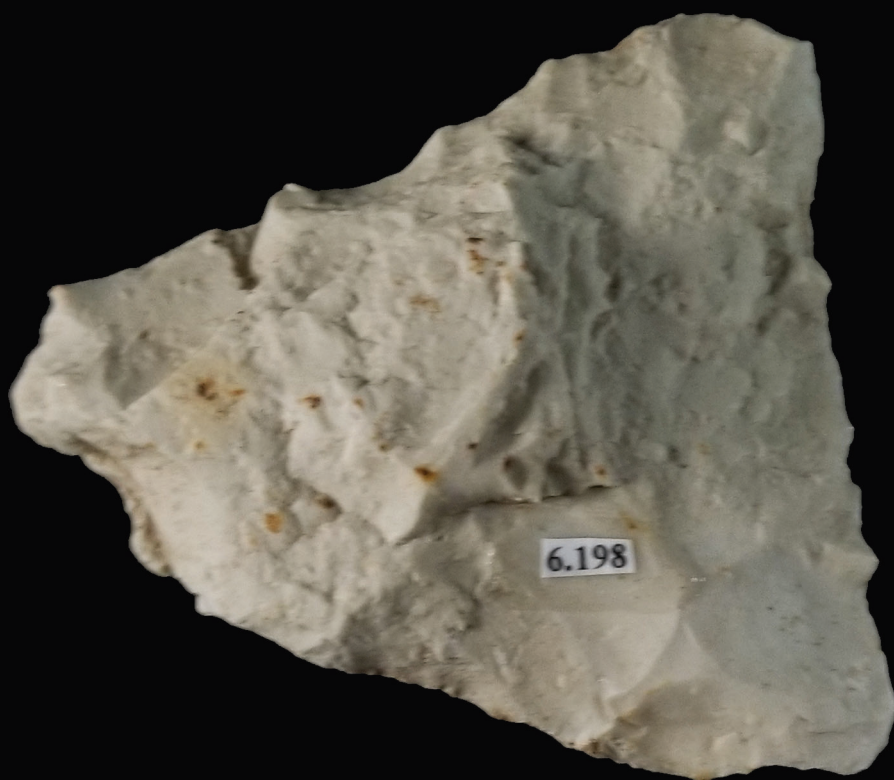


CM



6.198

Biface, Maynes Creek variety chert



CM



6.199

Biface, Maynes Creek variety chert



CM



6.200

Biface, Maynes Creek variety chert



CM



6.201

Biface, unidentified Pennsylvanian chert

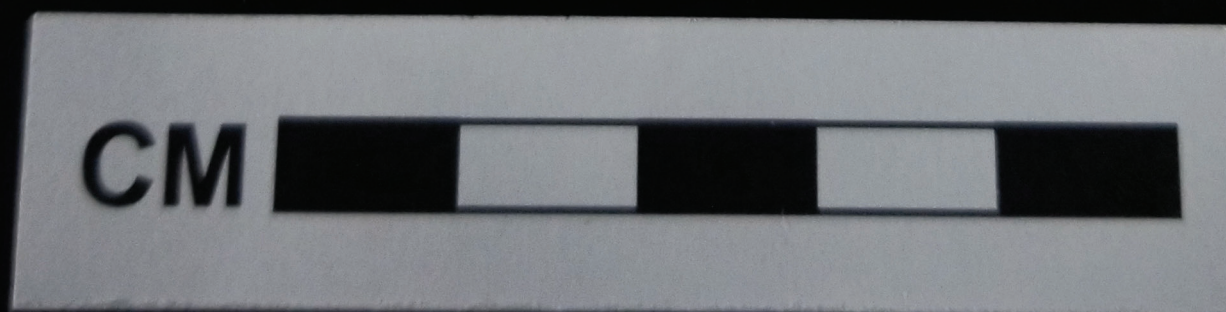
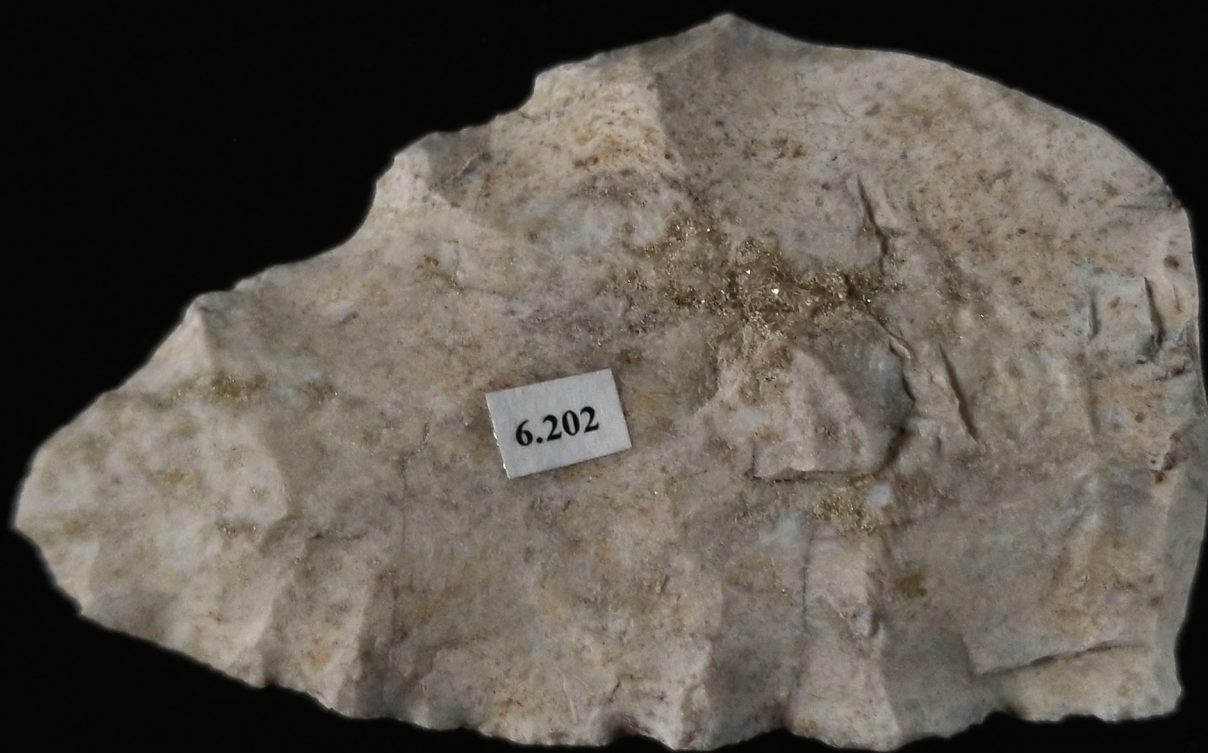


CM



6.202

Biface, heat-treated Maynes Creek variety chert



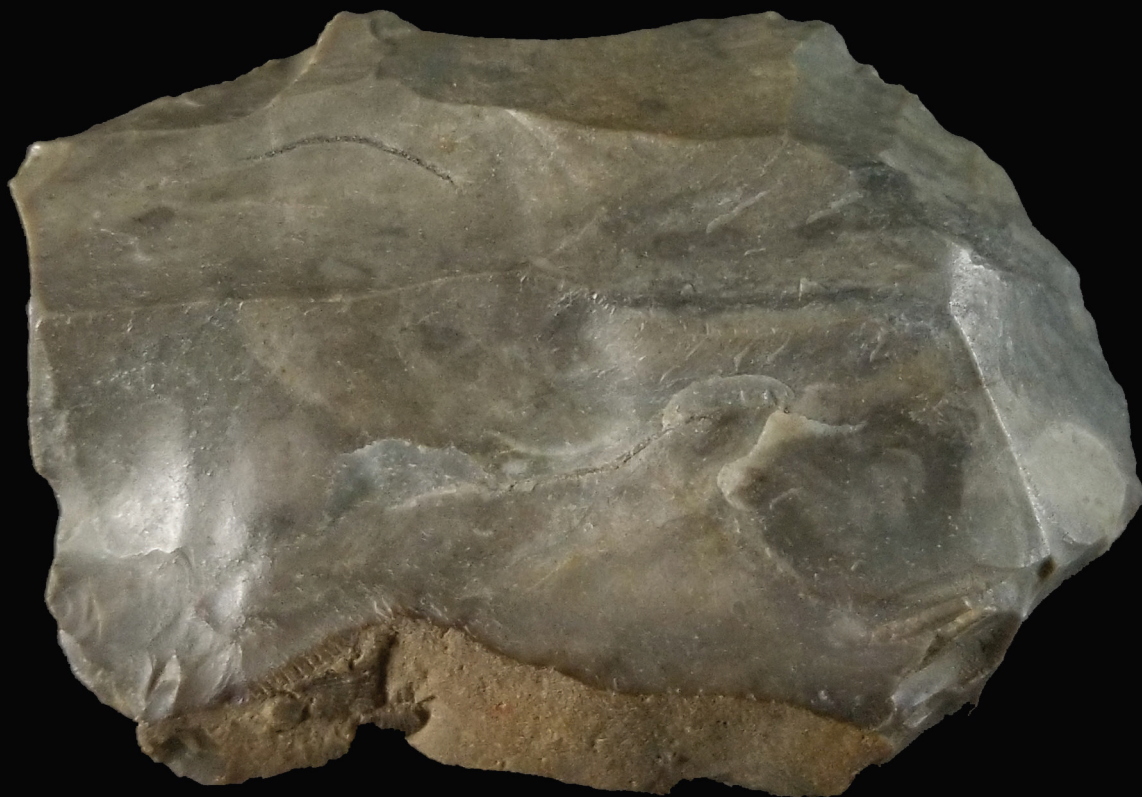
6.203

Core, Croton Banded chert



6.204

Biface, Argentine chert



CM



6.205

Biface, heat-treated Maynes Creek variety chert

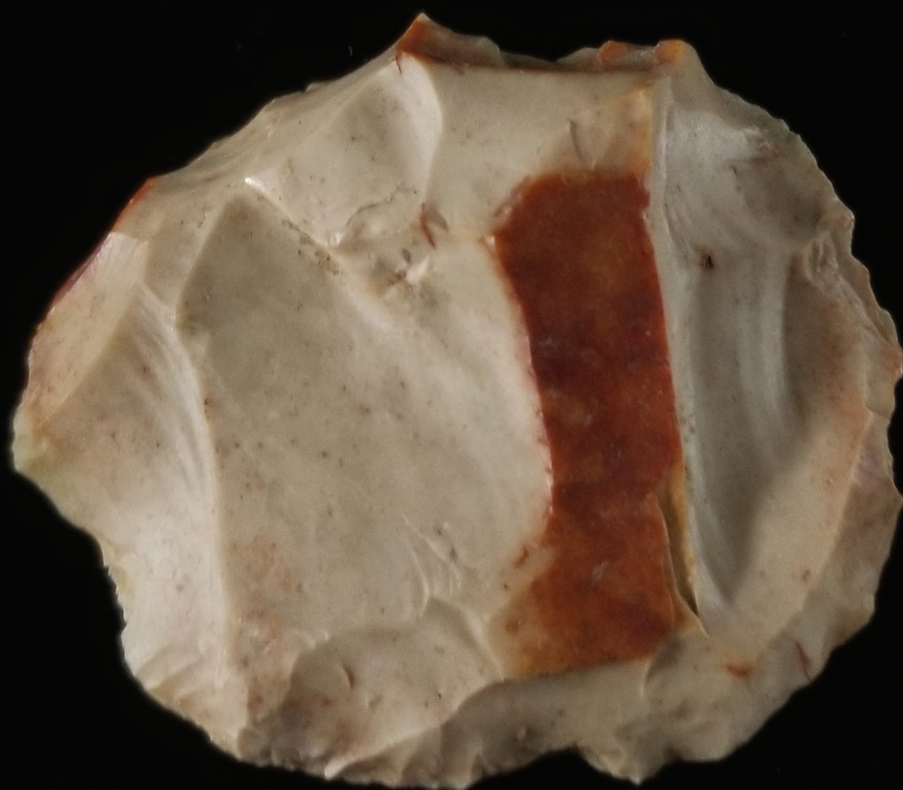


CM



6.206

Biface, heat-treated Maynes Creek variety chert



CM



6.207

Biface, Warsaw Tabular chert



CM



6.208

Core fragment, heat-treated Croton Banded chert

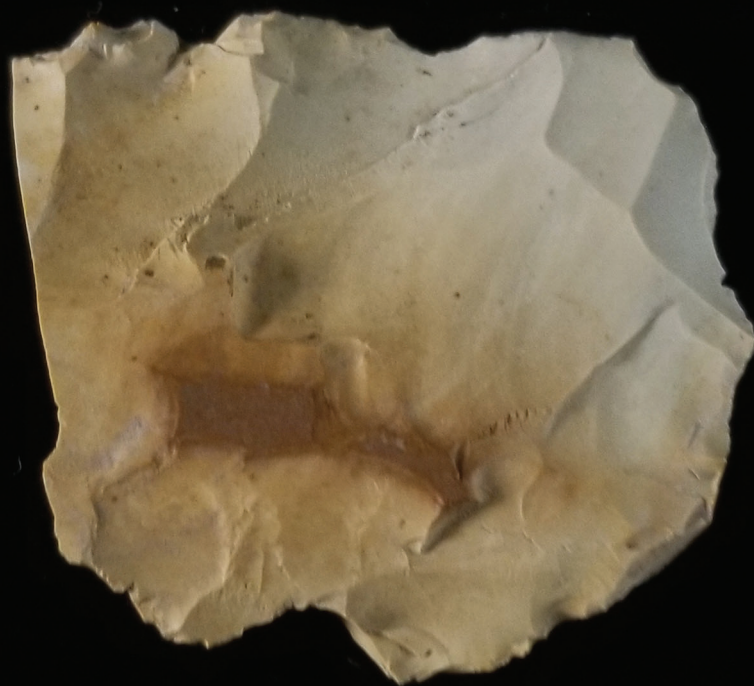


CM



6.209

Biface, Maynes Creek variety chert



CM



6.210

Biface, Burlington chert



CM



6.211

Core, heat-treated Maynes Creek variety chert



CM



6.212

Late-stage biface, Maynes Creek variety chert



CM



6.213

Biface, heat-treated Croton Chalcedonic



CM

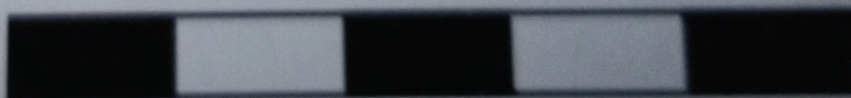


6.214

Biface, Maynes Creek variety chert



CM



6.215

Biface, Maynes Creek variety chert



CM



6.216

**Late Archaic, Table Rock projectile point
midsection and proximal end, heat-treated
Winterset chert**



CM

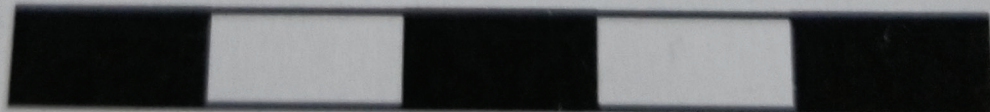


6.217

**Late Archaic, Durst projectile point, Maynes
Creek variety chert**



CM



6.218

**Unidentified project point distal end-tip,
heat-treated Maynes Creek variety chert**



CM



6.219

**Unidentified projectile point, distal end-tip,
heat-treated Maynes Creek variety chert**



CM



6.220

Unidentified projectile point distal end-tip,
heat-treated Croton Chalcedonic

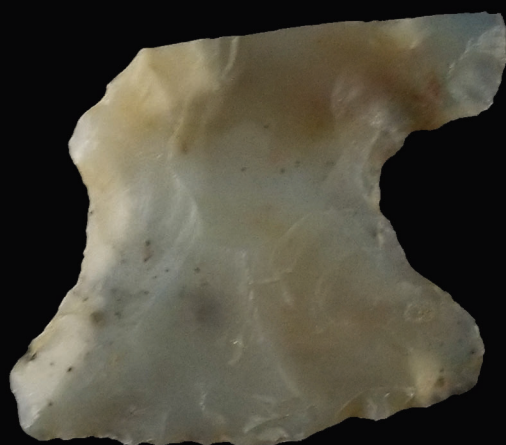


CM



6.221

Unidentified projectile point proximal end-base
with shoulder, corner notching technique,
heat-treated Croton Chalcedonic

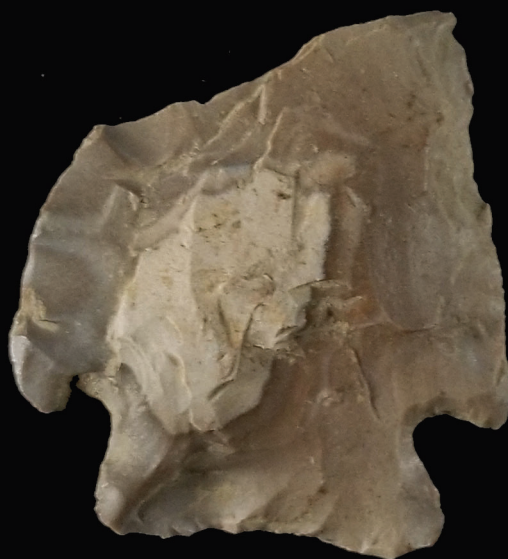


CM



6.222

**Late Archaic / Early Late Woodland, Pelican Lake
projectile point, heat-treated Warsaw Tabular
chert**



CM



6.223

**Early Archaic, Stillwell projectile point proximal
end-base, Maynes Creek variety chert**



CM



6.224

Unidentified projectile point midsection and proximal end-base with shoulder, corner notching technique, heat-treated Maynes Creek variety chert



6.225

**Unidentified projectile point distal end-tip,
heat-treated Maynes Creek variety chert**



CM



6.226

**Unidentified projectile point distal end-tip,
heat-treated Croton Banded chert**



CM



6.227

**Unidentified projectile point distal end-tip, Croton
Chalcedonic**

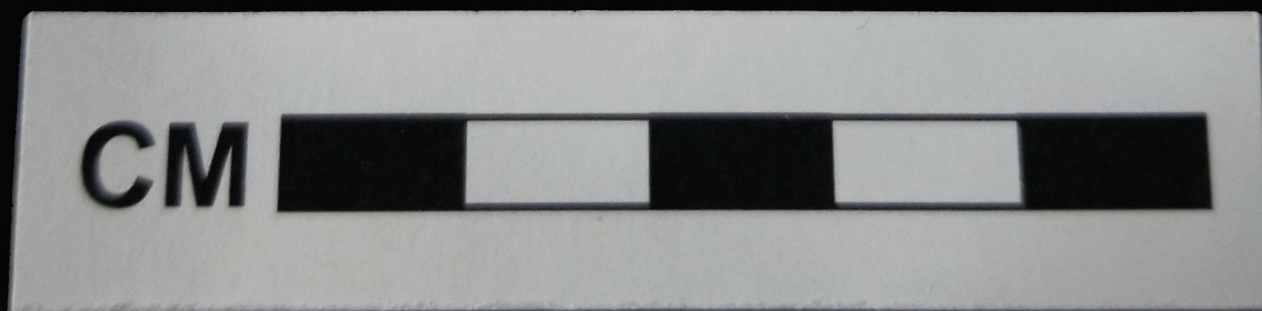


CM



6.228

Early / Middle Woodland, contracting stem
projectile point proximal end, Maynes Creek
variety chert



6.229

Unidentified projectile point proximal end-base,
Winterset chert



CM



6.231

**Unidentified projectile point, midsection and
partial proximal end-shoulder, heat-treated
Maynes Creek variety chert**



CM



6.232

Biface fragment, Glacial till chert



CM



6.233

Unidentified projectile point, midsection and partial base-shoulder, heat-treated Maynes Creek variety chert



CM



6.234

**Middle Archaic, Matanzas projectile point,
midsection and proximal end-base, heat-treated
Maynes Creek variety chert**

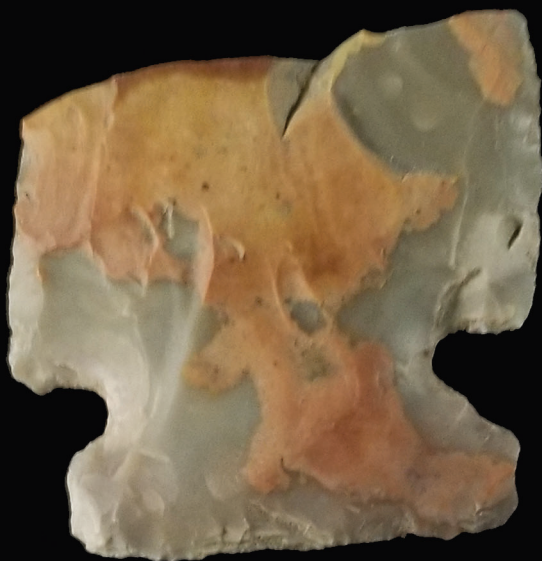


CM



6.235

**Middle / Late Archaic, Raddatz projectile point,
midsection and proximal end-base with notch,
heat-treated Warsaw Tabular chert**



CM



6.236

**Middle Woodland, Manker projectile point
proximal end-base, Winterset chert**

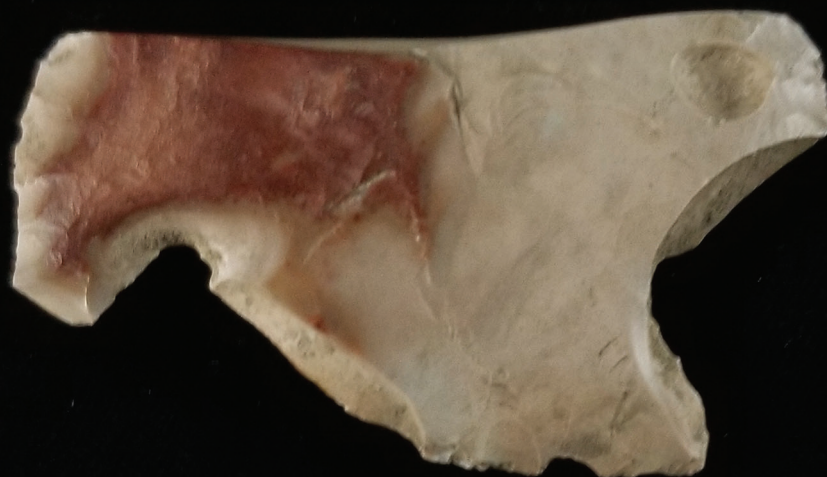


CM



6.237

**Biface fragment, heat-treated Warsaw Tabular
chert**



CM



6.238

**Late Archaic, Durst projectile point, Winterset
chert**



CM



6.239

**Unidentified projectile point, proximal end-base,
heat-treated Croton Banded chert**



CM



6.240

Unidentified projectile point, serrated distal end-tip, Winterset chert



CM



6.241

Perforator, Quartzite



CM



6.242

Perforator, Maynes Creek variety chert



CM



6.243

**Late Archaic, Sedalia projectile point, midsection
and proximal end-base, heat-treated Maynes
Creek variety chert**



CM



6.244

**Unidentified projectile point, distal end-tip,
Glacial till chert**



CM



6.245

Unidentified projectile point midsection, Maynes
Creek variety chert



6.246

**Late Archic / Early Late Woodland, Pelican Lake
projectile point, midsection and proximal
end-base with barbs, Maynes Creek variety chert**

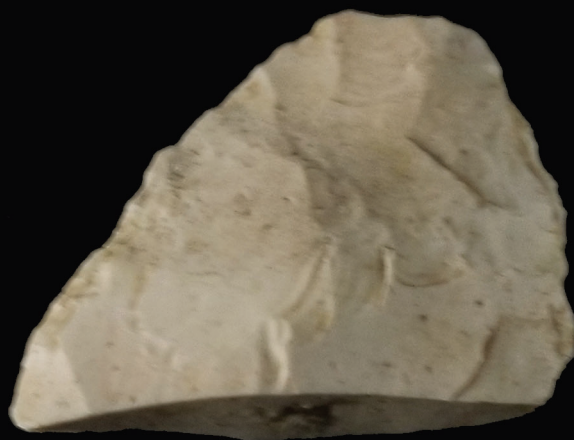


CM



6.247

**Unidentified projectile point, distal end-tip,
Maynes Creek variety chert**



CM



6.248

Unidentified projectile point, midsection and proximal end-shoulder, heat-treated Maynes Creek variety chert



CM

6.249

Unidentified projectile point, distal end and
partial midsection, Maynes Creek variety chert



CM



6.250

**Unidentified projectile point, distal end and
midsection, heat-treated Maynes Creek variety
chert**



CM



6.251

Unidentified projectile point, distal end-tip,
Winterset chert



CM

6.252

**Unidentified projectile point, distal end-tip,
heat-treated Maynes Creek variety chert**



CM



6.253

**Late Archaic, Durst projectile point, heat-treated
Maynes Creek variety chert**



CM



6.254

**Unidentified projectile point distal end and
midsection, Croton Banded chert**



CM



6.255

**Late Paleoindian, Agate Basin proximal
end-base, heat-treated Maynes Creek variety
chert**



CM



6.256

**Early Archaic, Hardin Barbed projectile point,
proximal end-base with barbs, Burlington chert**



CM



6.257

**Late Woodland, Klunk projectile point, Maynes
Creek variety chert**



CM



6.258

Unidentified projectile point, midsection and partial proximal end-base, corner notching technique, unidentified Pennsylvanian chert



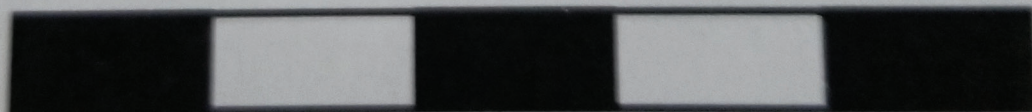
CM

6.259

**Unidentified projectile point, distal end-tip,
heat-treated Maynes Creek variety chert**



CM



6.260

Middle Woodland, Mankier projectile point, distal end and midsection, corner notching technique, heat-treated Maynes Creek variety chert



CM



6.261

**Early Archaic knife, distal end and midsection,
Burlington chert**



CM



6.262

Unidentified projectile point, distal end-tip,
Burlington chert

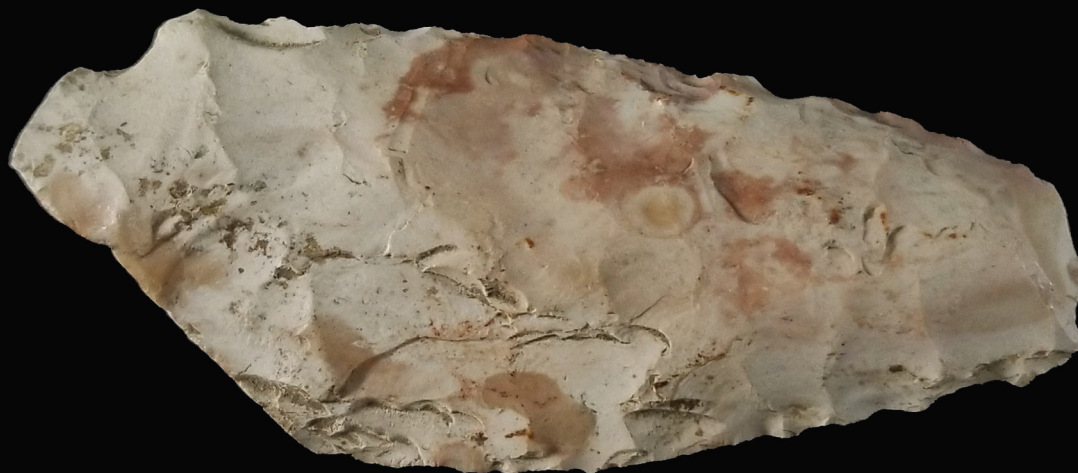


CM



6.263

**Unidentified projectile point, midsection and
partial proximal end-shoulder, heat-treated
Maynes Creek variety chert**

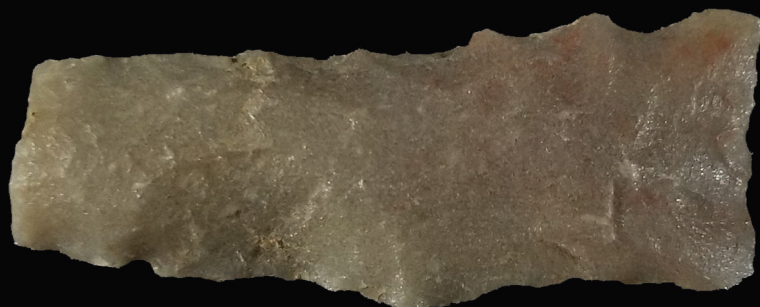


CM



6.264

Drill, midsection and base, heat-treated Croton
Chalcedonic



CM



6.265

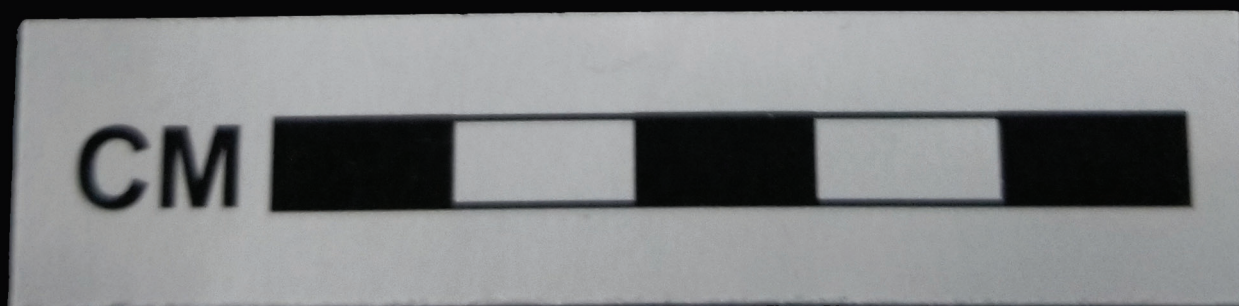
Unidentified projectile point, midsection and proximal end-base with shoulder, corner notching technique, Maynes Creek variety chert



CM

6.266

**Middle Archaic, Jakie projectile point, midsection
and proximal end-base with notching,
heat-treated Maynes Creek variety chert**



6.267

Late Woodland, unidentified arrowpoint,
heat-treated Warsaw Tabular chert



CM



6.268

Late Woodland, Scallorn-Koster projectile point,
Burlington chert



CM



6.269

Drill, proximal end-base, Maynes Creek variety
chert



CM



6.270

**Unidentified projectile point, midsection and
distal end-tip, Maynes Creek variety chert**



CM



6.271

Unidentified projectile point, distal end-tip,
Maynes Creek variety chert



CM



6.272

**Late Archaic / Early Late Woodland, Pelican Lake
projectile point, midsection and proximal
end-base with notch, heat-treated Maynes Creek
variety chert**



CM



6.273

**Unidentified projectile point, proximal end-base,
heat-treated Croton Banded chert**



CM



6.274

**Late Archaic, Table Rock projectile point,
proximal end-base, Burlington chert**



CM



6.275

**Unidentified projectile point, distal end-tip,
heat-treated Maynes Creek variety chert**



CM



6.276

**Unidentified projectile point, proimal end-base,
Maynes Creek variety chert**



CM



6.277

**Unidentified projectile point, distal end and
partial midsection, Maynes Creek variety chert**



CM



6.278

**Early/Middle Woodland, Adena projectile point,
midsection and proximal end, heat-treated
Maynes Creek variety chert**



CM



6.279

Unidentified projectile point, distal end-tip,
Glacial till chert



CM



6.280

Unidentified projectile point, distal end-tip,
Maynes Creek variety chert



CM



6.281

**Unidentified projectile point, midsection,
heat-treated Maynes Creek variety chert**



CM

6.282

Late Woodland / Late Prehistoric, Madison
projectile point, Maynes Creek variety chert



CM



6.283

**Unidentified projectile point, distal end and
midsection, Glacial till chert**



CM



6.284

**Unidentified projectile point, partial midsection
and proximal end-base with shoulder, Maynes
Creek variety chert**



CM



6.285

**Unidentified projectile point, distal end-tip,
heat-treated Maynes Creek variety chert**

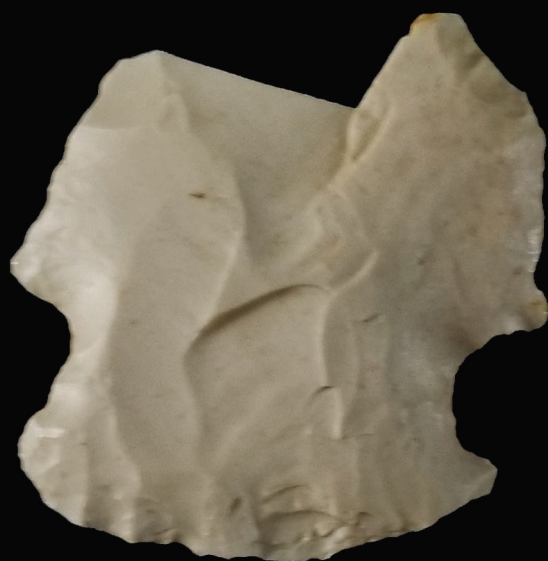


CM



6.286

**Middle Woodland, Gibson projectile point,
proximal end-base with notch, heat-treated
Maynes Creek variety chert**



CM



6.287

**Unidentified projectile point, midsection and
partial proximal end-base, heat-treated Argentine
chert**



CM



6.288

**Unidentified projectile point, proximal end-base,
heat-treated Maynes Creek variety chert**



CM



6.289

Unidentified projectile point, midsection, Croton
Banded chert



CM



6.290

**Late Archaic, Table Rock projectile point,
midsection and partial proximal end-base,
Maynes Creek variety chert**



CM



6.291

**Middle/Late Archaic, Raddatz projectile point,
midsection and proximal end, Maynes Creek
variety chert**



CM



6.292

**Late Archaic, Table Rock projectile point,
midsection and proximal end-base and
shoulders, heat-treated Maynes Creek variety
chert**



CM



6.293

**Unidentified projectile point, proximal end-base,
Croton Banded chert**



CM



6.294

**Biface fragment, heat-treated Maynes Creek
variety chert**



CM



6.295

Biface fragment, Maynes Creek variety chert

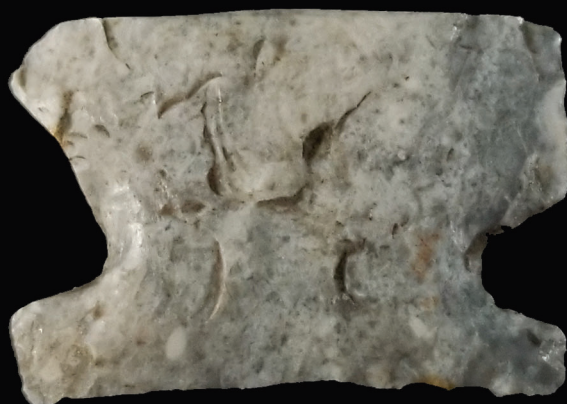


CM



6.296

Middle Archaic, Matanzas projectile point,
proximal end-base with notching, Burlington
chert



CM



6.297

Unidentified projectile point, midsection,
Quartzite



CM



6.298

**Unidentified projectile point, distal end and
partial midsection, Maynes Creek variety chert**

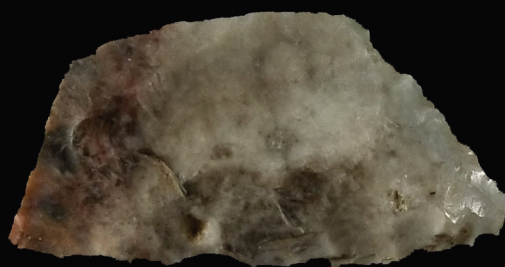


CM



6.299

**Unidentified projectile point, distal end-tip,
heat-treated Croton Banded chert**



CM

