

Iowa State University Collection

Slides 7.1 – 15.11

During the construction of the initial Yellow Banks Park road in 1977, archaeologists with ISU monitored the earthmoving activities during the project. The archaeologists were to recover any artifacts that might be exposed during the disturbance of the landscape. During the course of the monitoring period, cultural materials in the form of chipped stone tools, cores and core fragments, hammer stones, ground stone, shatter, and waste flakes were discovered (Osbron and Gradwohl 3). Several historic items were also recovered during the monitoring, including several crockery and glass sherds, buttons, buckles, and iron tools. The discovery of historic items suggests the presence of early settlers in this area almost immediately followed the occupation of people from the Late Pre-Historic period.

Reference:

Osborn, Nancy and Gradwohl, David, Report of the Archaeological Monitoring of the Initial Road Construction within the S.E. Polk County Park, Iowa, Letter, Iowa State University Archaeological Laboratory, 1978.



7.1

**Middle Woodland, corner-notched variety
(Snyders, Gibson, Manker)**



7.2

**Late Paleoindian Agate Basin, lanceolate
(midsection and proximal end)**



7.3

Middle Archaic



7.4

Middle Archaic



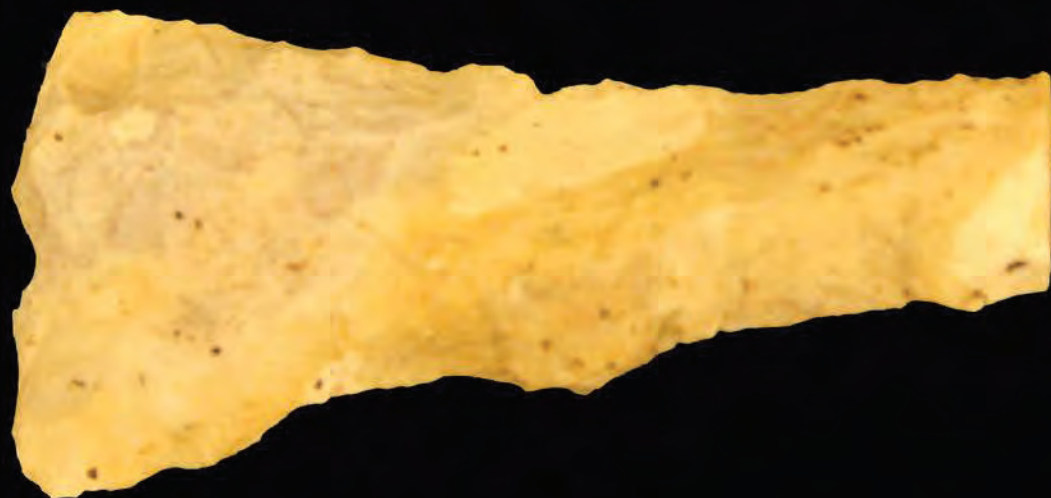
7.5

Unidentified Projectile Point, Not time diagnostic



7.6

Unidentified Projectile Point, Not time diagnostic



7.7

Unidentified Projectile Point, Not time diagnostic



7.8

Middel Archaic



8.1

Early Woodland



8.2

Unidentified Projectile Point, Not time diagnostic



9.1

Early Woodland



9.2

Unidentified Projectile Point, Not time diagnostic



10.1

Unidentified Projectile Point, Not time diagnostic



11.1

Early Woodland



11.2

Not time diagnostic



12.1

Late Archaic, projectile point, Nebo Hill



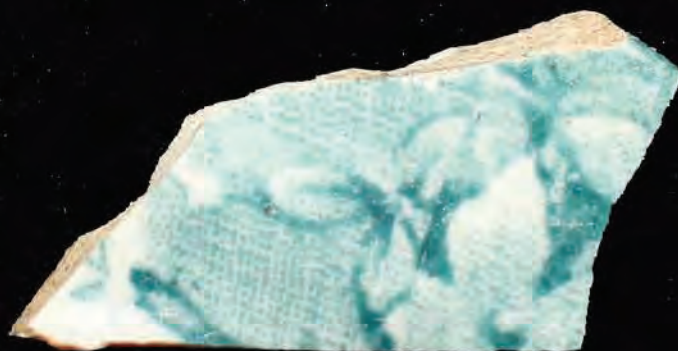
12.2

**Unidentifiable, possibly shaft smoother/shaper
for wood or bone working**



13.1

**White-pasted earthenware, green transfer print,
popular 1860-1880**



13.2

Machine cut nail, typically 1850-1890



13.3

Western Stoneware Co., Monmouth, IL, Historic



13.4

Iron, Historic



13.5

Cast iron stove part, Historic



13.6

Stoneware- includes wheel thrown (pre- 1880)



13.7

Unidentified printed pattern crock, Historic



13.8

Stoneware wheel thrown, pre-1880



13.9

Cast iron stove part, Historic



13.10

Unidentified crock sherd, Historic



13.11

Solarized glass, 1880-1917



13.12

Door shaft, Historic



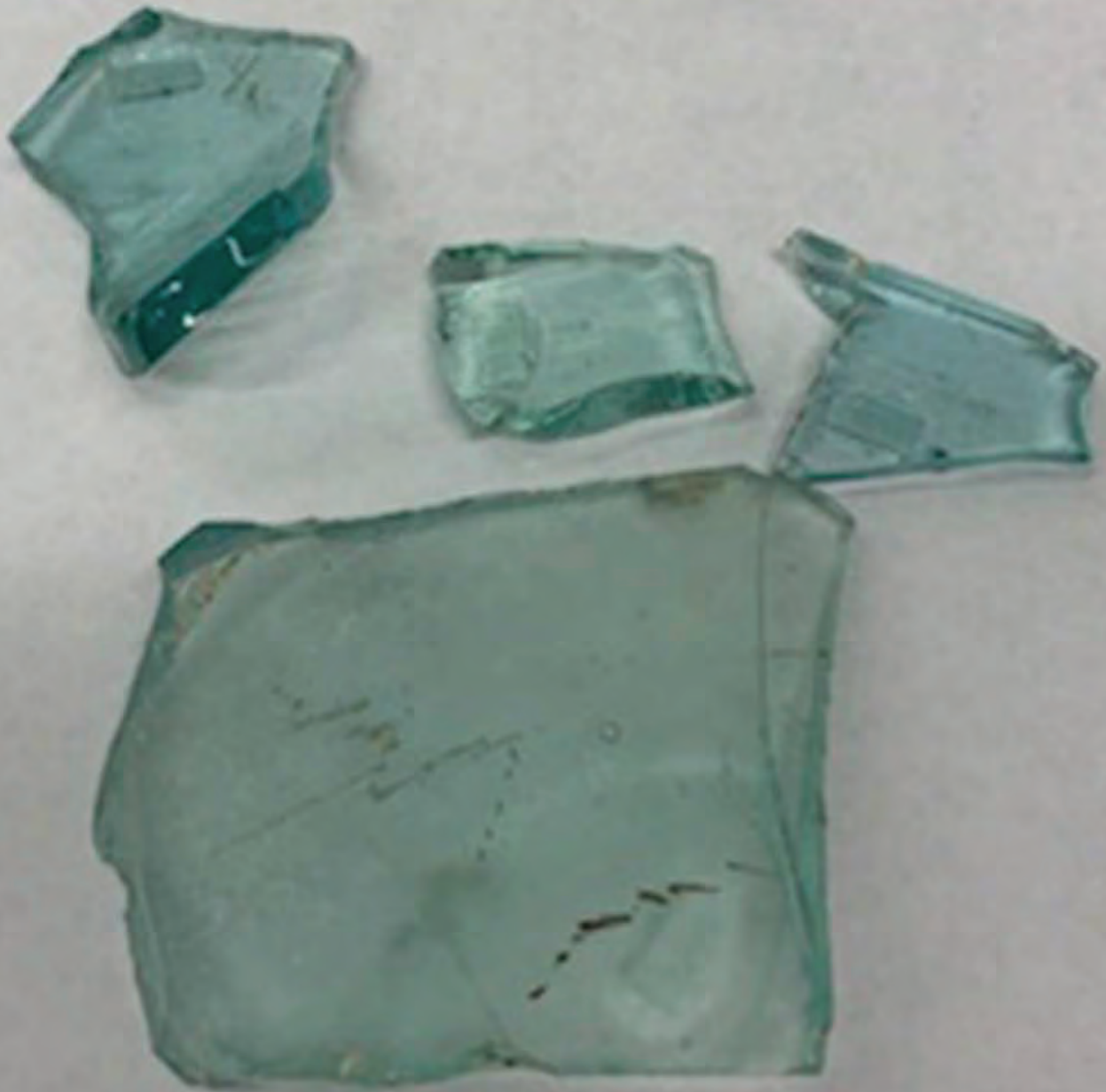
13.13

Machine-cut nail, typically 1850-1890



13.14

Unidentified green glass, Historic



13.16

Unidentified porcelain



13.17

Unidentifiable clear glass, Historic



14.1

Double ended crescent wrench, Historic



15.1

Rounded buckle, Historic



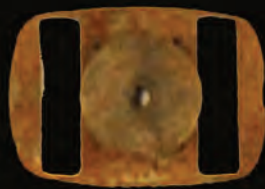
15.2

Star cuff buttons, Historic



15.3

Strap fastener, Historic



15.4

Rectangle buckle, Historic



15.5

Possible garter clips, Historic



15.6

Stoneware, mold-cast, salt glaze exterior,

1880-1940



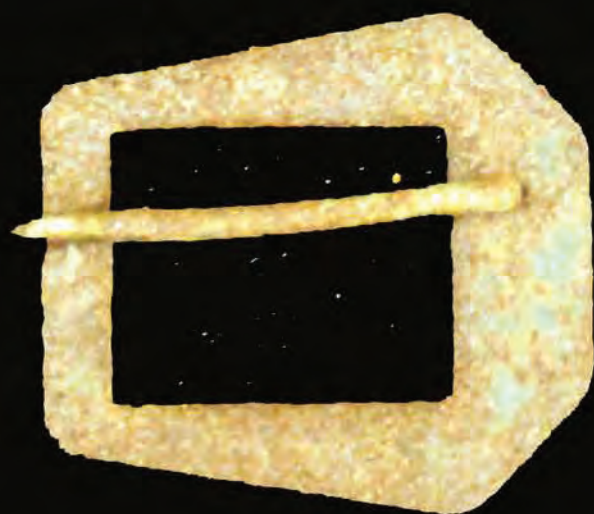
15.7

Rectangle buckle with rounded corners, Historic



15.8

Buckle with cropped corners, Historic



15.9

Button, Historic



15.10

Surface Grindig Wheel Fragment, Historic



15.11

Chinking, Historic

